



THE DISTRICT DIGEST

SECOND EDITION
09.2019

DISCOVER GASLIGHT

Explore The Gaslight District and everything it offers.

DISCOVER GALT

Thriving new businesses and development in the core.

DISCOVER LIVING

Stylish suites and amazing amenities that soar above the city.

DISCOVER LIFESTYLE

Meet some of the incredible tenants in and around the District.



DISTRICT

Your Digest to Discover The Gaslight District.

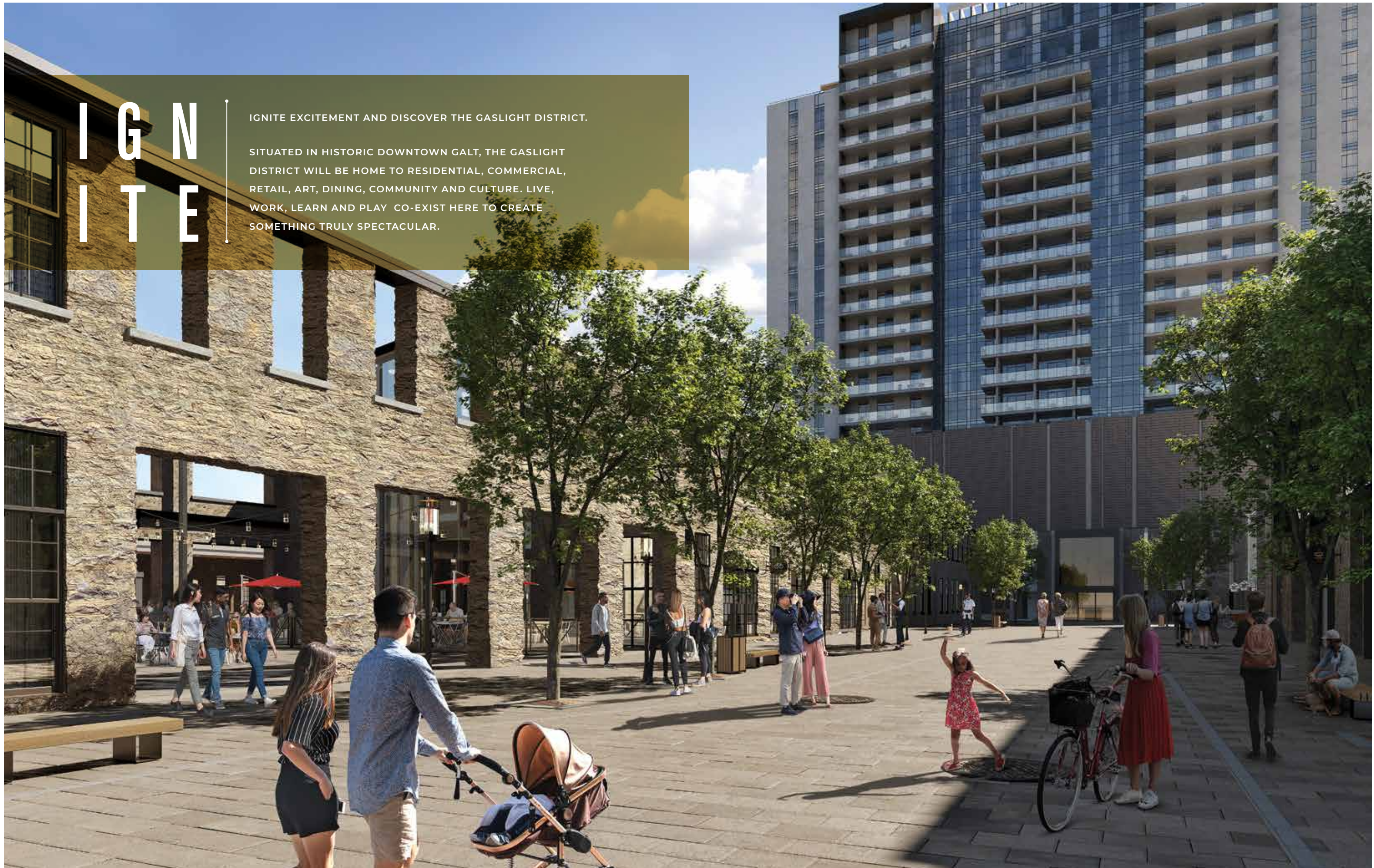
TABLE OF CONTENTS

ABOUT THE DISTRICT.....	4
DEVELOPER'S MESSAGE.....	6
SITE HISTORY.....	11
SITE PLAN.....	15
MEANDER.....	29
LIVING SPACES & AMENITIES.....	36
RESIDENCE LOBBY.....	37
RESIDENCE LOUNGE.....	43
TOWER 1 AMENITIES.....	48
FITNESS CENTRE.....	49
TOWER 2 AMENITIES.....	51
TERRACE DESIGN.....	53
STUDIOS AT GASLIGHT.....	55
THE COMMUNITY.....	58
TAPESTRY HALL.....	63
HAMILTON FAMILY THEATRE.....	69
DAILY TOUS LES JOURS.....	79
THE MRKT.....	81
GASLIGHT EVENTS COMPANY.....	85
FOUNDRY BREWING.....	87

IGNITE

IGNITE EXCITEMENT AND DISCOVER THE GASLIGHT DISTRICT.

SITUATED IN HISTORIC DOWNTOWN GALT, THE GASLIGHT DISTRICT WILL BE HOME TO RESIDENTIAL, COMMERCIAL, RETAIL, ART, DINING, COMMUNITY AND CULTURE. LIVE, WORK, LEARN AND PLAY CO-EXIST HERE TO CREATE SOMETHING TRULY SPECTACULAR.





YOUR NEW LUCKY NUMBER

CREATIVELY CRAFTED MENU & LOCAL TAPROOM

13 FOOD & BEVERAGE
13 MAIN STREET, CAMBRIDGE

TEL: 519-622-1799

WWW.LOCAL13.COM



Let's Get Together

In 2017 HIP Developments launched The Gaslight District with a spectacular one-day unveiling event. The response to the first phase of residential units was overwhelming; we sold-out in 48 hours. More importantly, the concept was received with enthusiasm. Clearly, Cambridge was ready for an urban live-work-play environment.

Two years later, the plans are complete, approvals obtained and permits issued. The time has come to re-purpose century old structures, dig foundations and build.

Is this what The Gaslight District is all about? Towers, residences and places to eat, drink, work and play? The simple answer is yes, but judging by the response you gave at our release, I believe we are building something more deeply essential for our community.

For me, The Gaslight District is a place where people come together. When cities are planned properly, with urban density and vibrant public spaces, they become the ideal environment where social barriers can be broken down. These type of places are where

bonds and collective identity can be created at a grass roots level. This is extremely relevant today as the digital world, that sometimes seems to be overtaking reality, fails to bring us together. It is dividing us as it organizes society into silos of similarity. We learn less about people who are different...and we seem to slowly grow suspicious of the world around us.

I can promise that at Gaslight Square, with its cafés, restaurants and public areas of play, you will rub shoulders with people you've never met as you smile, laugh and slowly start to define who we are. The Gaslight District will be an ever changing experience, and it will be fun.

So I guess the answer to "What are we building?" is that we are building a better kind of city with cultural places that bring us together and help make our part of the world a better place to live and dream of the future.

For myself, someone who was born and raised in Cambridge, this is important to me. I hope it is just as important to you and your family as well.

SCOTT HIGGINS
President, HIP Developments



The HIP Developments Team

REIMAGINE

JUST STEPS FROM THE GRAND RIVER, THE GASLIGHT CONDOS ARE AN ELEGANT EXAMPLE OF THE MANY ARCHITECTURAL GEMS THAT BRING DEPTH AND TEXTURE TO BEAUTIFUL DOWNTOWN GALT.

INFUSING PAST AND PRESENT, MANY OF THE HISTORIC BUILDINGS SURROUNDING THE DEVELOPMENT HAVE BEEN PRESERVED AS PART OF A COMPREHENSIVE AND THOUGHTFULLY ENVISIONED MASTER COMMUNITY PLAN.

TUCKED NEATLY BETWEEN HISTORICALLY LANDMARKED BUILDINGS, RESIDENTS WILL RECALL THE ELEGANCE OF EUROPEAN INSPIRED OLD WORLD CHARM.







LIFE
AT THE
INTERSECTION
OF

TODAY & YESTERDAY



OLD SOUTHWORKS FACTORY
Photo Courtesy of City of Cambridge Archives



There has always been something magical about old buildings. They are constantly alluring, and those in The Gaslight District are no exception.

Imagine what it would be like to have one foot firmly in the past and one just as solidly in the future. That's how life at The Gaslight District, the former Southworks location, will be.

For more than one hundred years, Southworks has been integral to the history of Galt. Originally it was the location of the Dumfries Foundry, which moved to the site in 1847. Three years later, founding partner James Andrews left the business and fellow partner James Crombie took over, renaming the business James Crombie & Co.

In 1854, the Crimean War brought an industrial boom to Galt, promoting considerable growth for Crombie & Co. By 1859, two enterprising Scottish employees, John Goldie and Hugh McCulloch, bought the company from Crombie, and the name was changed to The Goldie & McCulloch Co. Manufacturing grew to include steam engines and turbines, turbine water wheels, and even safe doors.

Goldie McCulloch thrived until 1923, when it merged with Babcock & Wilcox, continuing to manufacture boilers, engines, pumps, and turbines, and became known as their South Works, before closing in 1987.

In its most recent incarnation, Southworks served for almost a quarter of a century as an outlet and antique mall, until the site closed to the public in 2017. And now Southworks is preparing to reopen for public use with a dynamic new concept.

There has always been something magical about old buildings. They are alluring, and those in The Gaslight District are no exception: the wooden floors with their rich patina, the ceilings, the massive wooden beams, the sunlight streaming through the huge windows. When it comes to urban spaces of this style, the old cliché has never been more true: they just don't make 'em like this anymore.



GOLDIE MCCULLOCH WORKERS
Photo Courtesy of City of Cambridge Archives

As the cornerstone of The Gaslight District, the vast majority of the original stone buildings will be lovingly restored. The buildings will enclose a public square faced with boutiques, galleries, and restaurants. »

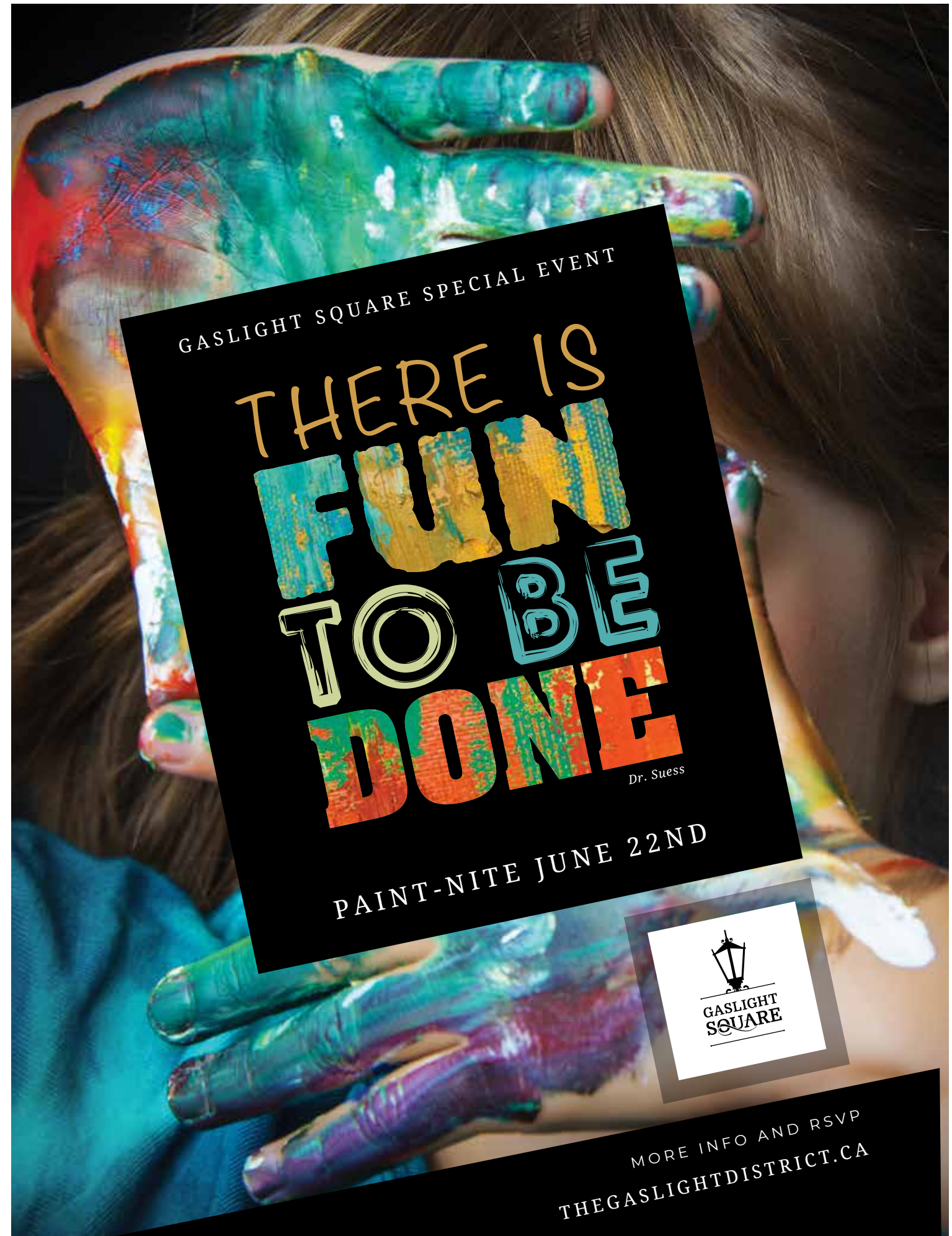


To walk the cobbled square is to be transported to another time and place. Exhibitions, live performances, spontaneous acts of eye-popping entertainment: anything is possible at The Gaslight District.

If being a visitor to The Gaslight District is a special experience, imagine how it would be to live there. Owning a suite in one of the new Gaslight Condos means you'll have an address right at the intersection of Galt's past and future. From any suite in either tower you'll have a spectacular view of some combination of the Gaslight District, the trees, the river, and the city.

Living here is not like living anywhere else. You'll be transported into a world of music, theatre, festivals, art, and fine dining. It's a year-round celebration of the best things in life, and it is all right at your doorstep.

But there's more to The Gaslight District than music and laughter. It's also a unique working environment that inspires innovative, creative thinking. The industrial age of the historical site may be over, but the marvellous buildings from that era have been redesigned as a centre for the digital age. This is your chance to join in that transformation. ■





BUILDING A

The MRKT (Boutique food market)
Underwing (Whisky bar & lounge)
Restaurant Space
Office Space

BUILDING B

Foundry Tavern
HIP Developments Office
Gaslight Events Company

BUILDING C

Tapestry Hall
Foundry Brewing
Energy+ Office
Office Space

BUILDING D

Conestoga College
Invest Cambridge

TOWER 1

Residences
Retail (main level)
Studios at Gaslight (main level)

TOWER 2

Residences
Studios at Gaslight (main level)

Site plan is artist's concept. Lot dimensions are approximate and depend on final survey. Landscape areas and plantings are concepts only and may vary from finished landscape. See sales representative for more information. E. & O. E.

LOCATION LOCATION LOCATION

Ride on with ion.
Future Ainslie Street station
just minutes from your
Gaslight District Condo.



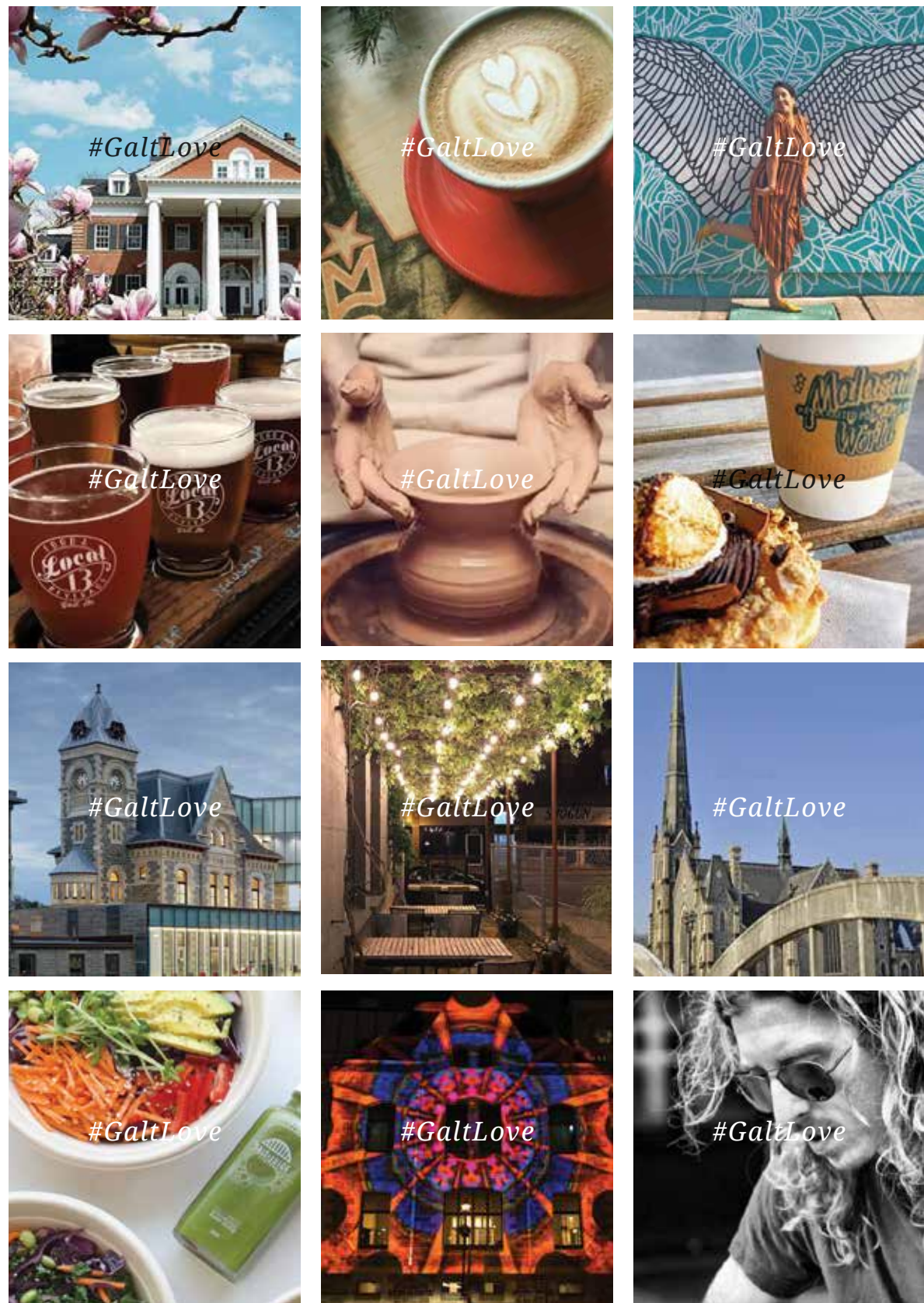
Menu coming soon



BEER IS *Just* THE BEGINNING

CRAFT BEER
REFINED FARE
GOOD FRIENDS
GREAT VIBES

64 Grand Ave. S. Cambridge



LOVE WHERE YOU LIVE #GALT LOVE

Through his #GaltLove movement, Eric Bolton is committed to fostering community engagement.

In high school, Eric Bolton moved with his family from Guelph to Galt. While some might have thought such a move catastrophic in their teen years, this wasn't the case for Eric. Not long after moving in he quickly fell in love with his new hometown, so much so that he's working tirelessly to raise more #GaltLove.

For Eric, celebrating Galt isn't just about hometown pride, it's bigger than that. "I think we have a stunning town that has a rich history with a river running right through it," Eric says. "We have the perfect set up to be as stunning a destination as Elora or Quebec City. Galt just needs to be brought to its full potential."

Eric's excited by the infusion of energy and development in his downtown core, including the redevelopment of the old Post Office, a new pedestrian bridge and the development of The Gaslight District. "I think all of it combined is helping draw attention to this town as an up and coming hot spot. On top of that, these huge projects are filling and revitalizing some incredible historic buildings that we are proud to have in Cambridge."

An entrepreneur, performer and musician, Eric owns E-Bolt Music School, a small concert venue and retail space. A big supporter of the community, he also arranges music for many local events and festivals.

"What sets E-Bolt apart is our team of teachers, beautiful studio and active community involvement," says Eric. "We also strongly support original music from local and touring artists - we are the only company in town arranging shows of our kind."

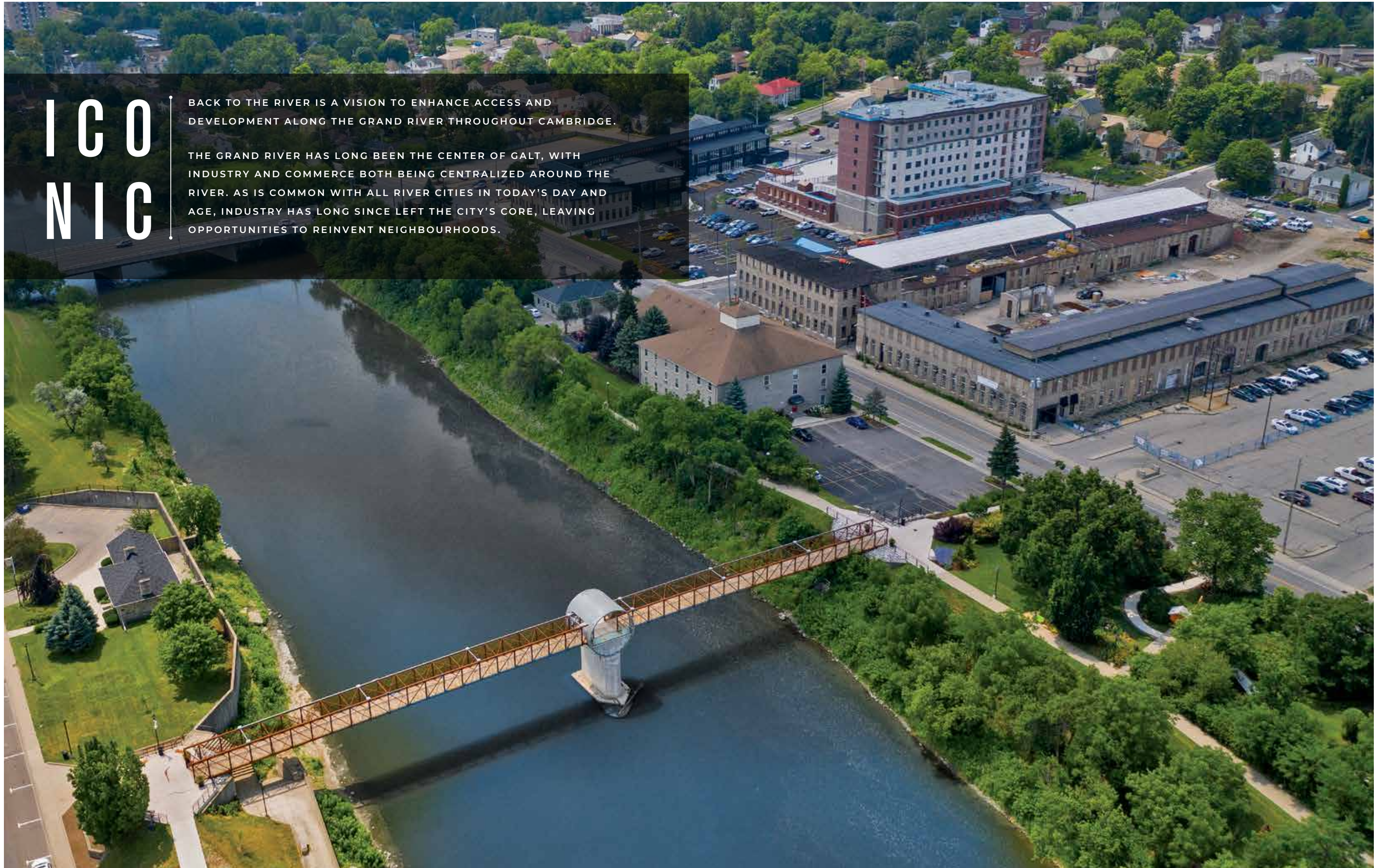
"The goal of #GaltLove is shared appreciation of our businesses, business owners and fellow citizens of Cambridge," Eric explains. "By being independent and without any set programming or funding, we are hoping to generate a mindset that isn't about events and deals, but rather about being a part of the growth of our town. If everyone gets involved on their own, without being told to, it creates a very real community building project that everyone is a part of. The hope is this mindset will stem into everyday living."

"Ultimately, I truly believe we need to promote a love for creating and help everyone see that it's the people of a town that can create a community," Eric concludes. "Too often people only come out or do things if it's paved and prepared for them. We need every individual to begin investing in this town, even if just by spreading positive thoughts about what Galt could become."

ICONIC

BACK TO THE RIVER IS A VISION TO ENHANCE ACCESS AND DEVELOPMENT ALONG THE GRAND RIVER THROUGHOUT CAMBRIDGE.

THE GRAND RIVER HAS LONG BEEN THE CENTER OF GALT, WITH INDUSTRY AND COMMERCE BOTH BEING CENTRALIZED AROUND THE RIVER. AS IS COMMON WITH ALL RIVER CITIES IN TODAY'S DAY AND AGE, INDUSTRY HAS LONG SINCE LEFT THE CITY'S CORE, LEAVING OPPORTUNITIES TO REINVENT NEIGHBOURHOODS.

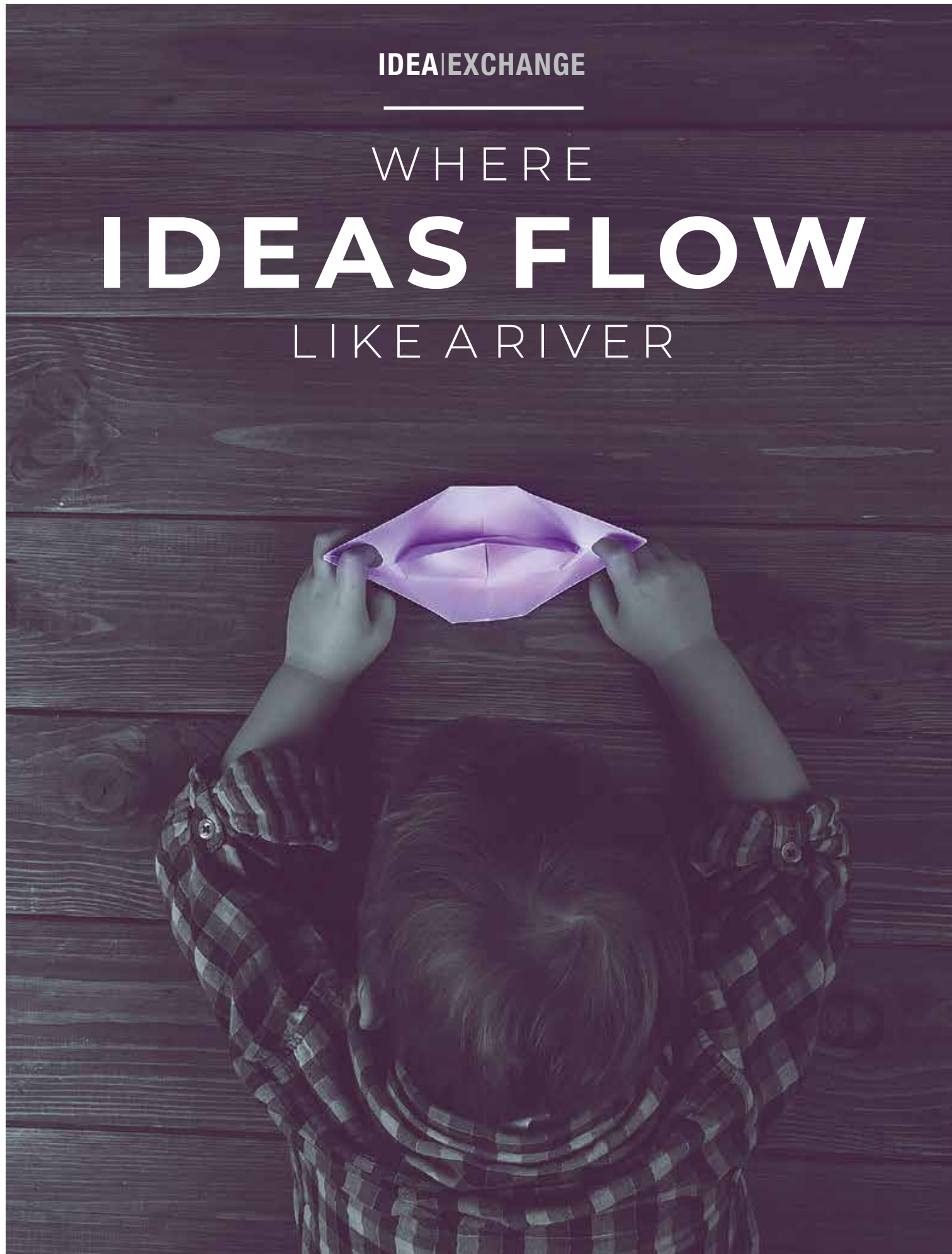


IDEA|EXCHANGE

WHERE

IDEAS FLOW

LIKE A RIVER



When the first library was created almost 5,000 years ago, no one unfurling those papyrus scrolls could have imagined what they would become many millennia later.



Libraries have always been remarkable repositories of humanity's greatest thinking; havens where knowledge is available to everyone. But ideas are not static. The evolution of human thought flows through history like a river. So what could be better than a new vision of a library right on the banks of the Grand?

Such is the innovative new Idea Exchange in Downtown Galt. Located on the riverbank in the Old Post Office Building, the Idea Exchange is a pleasant stroll from The Gaslight District.

"This will be a building with innovative programs for children, teens, parents & seniors. A true community gathering place for discovery & lifelong learning."

GARY PRICE
Board Chair, Idea Exchange

By capitalizing on the potential of the digital age, the Idea Exchange represents the latest stage in the evolution of the library. Printed books, magazines, recorded books, and DVDs remain staples, but they are augmented by a comprehensive array of 21st-Century

resources to promote the flourishing of ideas. This collection of technology, from the centuries old to that which will emerge tomorrow, is a vibrant centre of creativity.

The Idea Exchange isn't just a place for absorbing information. It's also a place to share concepts, and to re-imagine them in new ways. If that didn't happen, what kind of an Exchange would it be?

The exchange of ideas includes music, movies, meditation, and more. There are art courses and sculpting lessons, activities such as creating your own comic books, or hand-painting silk scarves. Here you might learn about 3D printing. Or, if you want to learn how to distinguish fake news from the real thing, the Idea Exchange can help with that too. This is a skill that is increasingly important in an age of "alternative facts". The array of possibilities for learning is as vast as knowledge itself.

The Idea Exchange is an intellectual amusement park for the curious. You can take your mind on the wildest rides, and it's all free. If the librarians in Nineva and Ephesus had these toys to play with, they'd have needed to order in more chairs. ■

DEVELOPMENT IS TAKING
PLACE ON BOTH SIDES OF
THE RIVER. IT'S NOT NEW
DEVELOPMENT, HOWEVER;
IT'S MORE LIKE RENEWED
DEVELOPMENT.



CRAIG'S CROSSING;
GALT PEDESTRIAN BRIDGE



CRAIG'S CROSSING LINKING PEOPLE WITH HISTORY

There's an ancient Chinese proverb: "The water changes always. The river changes never." But the banks of the river? Now that's a different story.

The Grand River has flowed along its unchanging course for thousands of years. For Galt, it has been a source of commerce, food, transportation, and relaxation.

Over time, the community's connection to the river has ebbed and flowed. But today, an energetic spirit has brought a refreshed commitment to the pursuit of knowledge, to entertainment and the arts, and to the history of the city. Linking all of these elements together is one of the most basic of structures: a bridge.

Development is taking place on both sides of the river. It's not new development, however; it's more like renewed development. In a time when historic buildings in other communities are under siege or have already been destroyed, similar buildings in Galt are being given new life and, in turn, bringing new life to the city. Here, the historic buildings that give Downtown Galt a distinctive feeling and a rare beauty are being refurbished and revitalized.

The Old Post Office, built in 1885, continues its role as a hub of communication by housing the Idea Exchange. The Riverside Silk Mill has become the University of Waterloo's School of Architecture. And the Southworks site, circa 1847, is reimagined as the foundation of The Gaslight District itself.

Buildings once used for manufacturing and warehousing will be home to small businesses, shops, artists' studios, and residential lofts. The resulting fresh diversity along the river will help keep downtown Galt alive. All these exciting changes will bring you back to the river.

The new pedestrian bridge, named Craig's Crossing in honour of former Mayor Doug Craig, who served as the city's mayor for 18 years will bring you over it. The bridge, was an integral part of Mayor Craig's 'Back to the River' initiative and one of his last accomplishments while in office. During the grand opening ceremony over 1000 people attended, and in the first 3 months over 120,000 crossings took place on the bridge that unites the two halves of the heart of Galt.

*"It sure became a hit in no time.
Everybody loves the bridge. Everybody
goes and crosses it."*

FRANK MONTEIRO
Councillor, City of Cambridge

With the convenient link of Craig's Crossing, you will move easily between shops, restaurants, theatres, and home, on either side of the river. Or you can simply pause on the bridge and watch the river flow past. As you do, bear in mind what has changed and what always stays the same. ■

UNIVERSITY OF WATERLOO

SCHOOL OF
ARCHITECTURE



RIVERSIDE SILK MILLS, Melville Street c. 1940
Photo Courtesy: City of Cambridge Archives



WATERLOO
SCHOOL OF ARCHITECTURE

Photography Credit:
Fred Hunsberger ©2016

DESIGNING THE FUTURE ON THE **FOUNDATION OF THE PAST**

It stands to reason that an internationally respected architecture school should be housed in a special building. So when the University of Waterloo was seeking a new permanent home in which to educate some of the best architects in the world, it looked to Galt, a city rich in wonderfully designed, lovingly built historic structures.

The Riverside Silk Mill had graced the banks of the Grand River for almost a century, having been built in 1919 by the McCormick brothers. Surrounded by parkland, many other heritage buildings, and the gently rolling river, it's the perfect setting for a school that highlights green architecture as well as prototyping, visualization, and computer assisted design. Now, the school's design studios, labs, exhibition galleries, and classrooms have found the perfect home there.

Open, bright, and spacious, the school is much more than an inspiring learning environment for its 400 students. Each year, some 200,000 people visit the building to attend exhibitions, watch films, and dine in the café. It is a community-centered and creative space designed to play a key role in an ongoing and essential development project: the continued revitalization of Downtown Galt.

Nestled among theatres, innovative design spaces, event venues, and artists' lofts, the School of Architecture is part of a richly reinvented community. It's an area that fosters the burgeoning of innovative thinking – all of it centred along the river. And, just as the Grand flows to the Great Lakes and on to the sea, people and ideas flow to the Grand. ■

WEAVE WANDER AND WONDER



ASTROCYTE

Philip Beesley & Alex Willms; 2017
Photo Credit: philipbeesleyarchitect.com ©



SIBYL
Philip Beesley
Sydney, Australia 2017
Photo Credit: philipbeesleyarchitect.com ©

PHILIP BEESLEY'S LIVING ARCHITECTURE

As the Grand River weaves through Galt it reminds us of our past and how we built our industry and prosperity. But, to the surprise of many, the Grand River can also teach us how to prosper in the future. For those who venture on and into the river, it reveals stories of a complex system that is rippling with life. Our meandering Grand River contains optimism.

The river we experience today wasn't always optimistic. Due to the impact of industrialization, it was once little more than a storm-water drain that carried away our community's waste. However, today it teams with life as nature positively responds to our efforts to understand, and work within, nature's structure. The Grand River Conservation Authority (GRCA), Canada's first watershed management agency, acts as custodians of nature. The result is a powerful example of hope for the world's sustainable future.

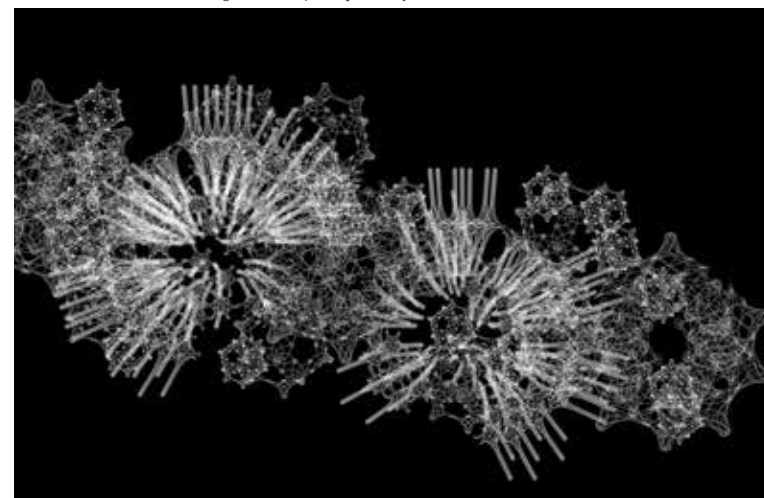
Meander, a living architecture sculpture by world renowned artist and University of Waterloo School of Architecture faculty member – Philip Beesley, creates a physical representation of nature's structure. It is

both a stunning work of art and a teaching tool for what we need to learn from the world around us. The art installation is constantly shifting and moving. It rises and flows like the meandering currents of the Grand River.

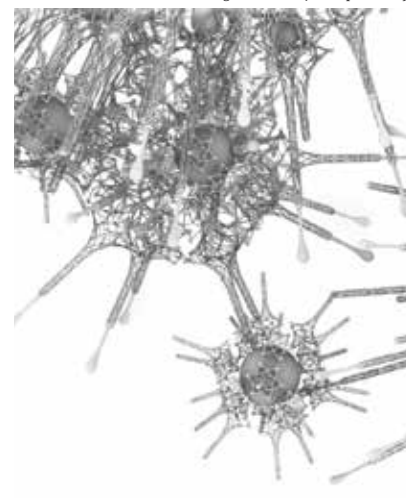
Sustainability and abundance are found when thinking and working in systems where boundaries are soft and flowing as opposed to rigid walls. That is nature's way. When you look up at Meander you will know it is art, but also a collaborative web of science, technology, engineering and chemistry. When seen this way, the sculpture, and our river, become a metaphor for nature's network and how to problem-solve difficult issues in complex environments. Meander will equip the next generation of Waterloo Region inventors with inspiration for thinking in new ways to solve challenges.

For a community with a history of innovative problem solving, the symbolic impact of Meander, the first permanent installation of a Beesley living architecture sculpture, will be profound. ■

MEANDER CONCEPT - Gaslight District | Philip Beesley 2019©



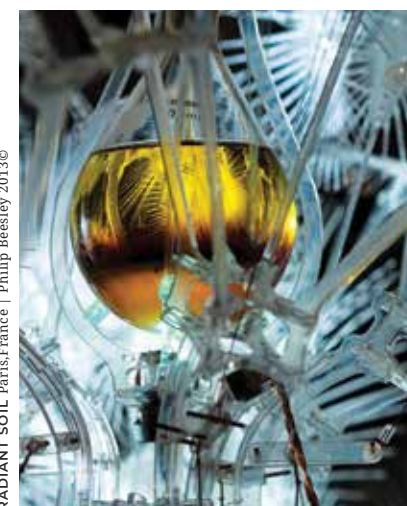
MEANDER CONCEPT - Gaslight District | Philip Beesley 2019©



VOLTAGE HAUTE COUTURE Philip Beesley and Irisvan Herpen 2017©



HYLOZOIC GROUND - Venice, Italy | Philip Beesley 2010 ©



RADIANT SOIL Paris, France | Philip Beesley 2013©



ASTROCYTE Toronto, Canada | Philip Beesley & Alex Williams 2017 ©

All Photo Credits: philipbeesleyarchitect.com ©



INSPIRING

INDULGENT IN SCALE AND
THOUGHTFUL IN DESIGN,
THE ARRAY OF AMENITIES
ARE EXCLUSIVELY
RESERVED FOR GASLIGHT
CONDOS HOMEOWNERS.

THESE WORLD CLASS
FACILITIES ARE AN
EXTENSION OF YOUR HOME
AT THE GASLIGHT CONDOS.
CONVENIENTLY LOCATED IN
YOUR BUILDING, YOU WILL
BEGIN TO REDEFINE YOUR
LIFESTYLE AND LIVE IN NEW
AND EXCITING WAYS.

INSPIRING LIVING SPACES LIFE AT GASLIGHT CONDOS

Over 30,000 sq.ft. of Indoor and Outdoor
Amenities & Building Features

LOBBY DESIGN



FLOORING



ELEMENTS



ACCENT PIECES



DESIGN INSPIRATION

ECLECTIC

STYLE

Sourcing the very best materials and trends, the lobby at Gaslight Condos will encompass a variety of periods and styles and will be brought together through the use of colour, texture, shape and finish. The linear design and extensive use of glass introduces residents and guests to the sophisticated interiors.

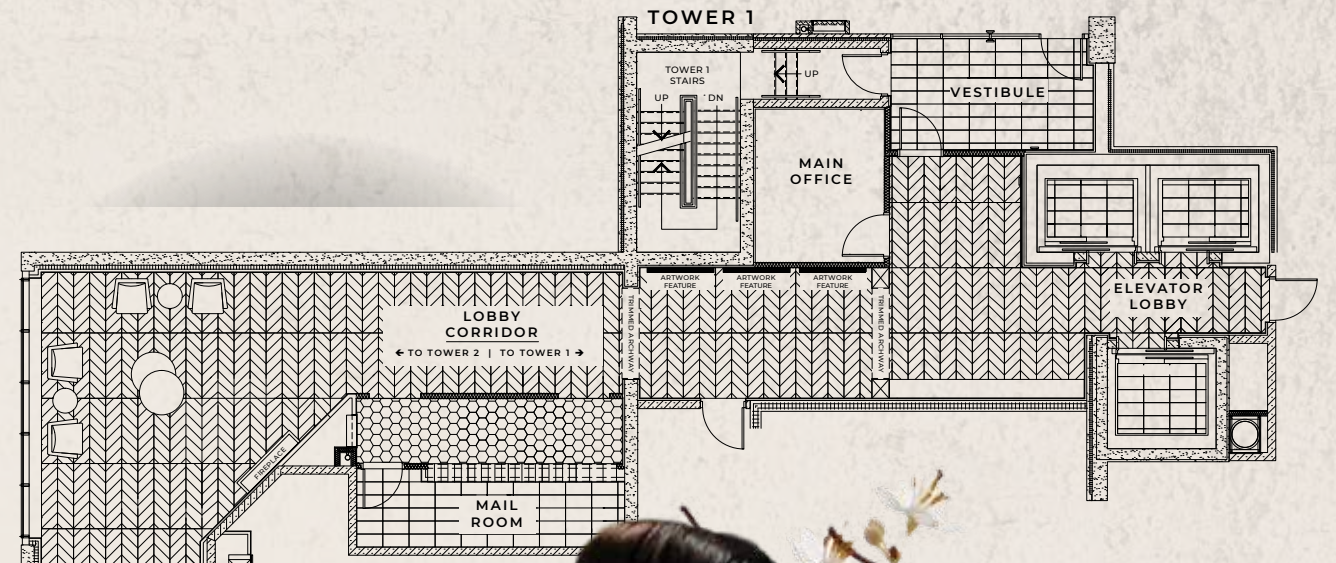
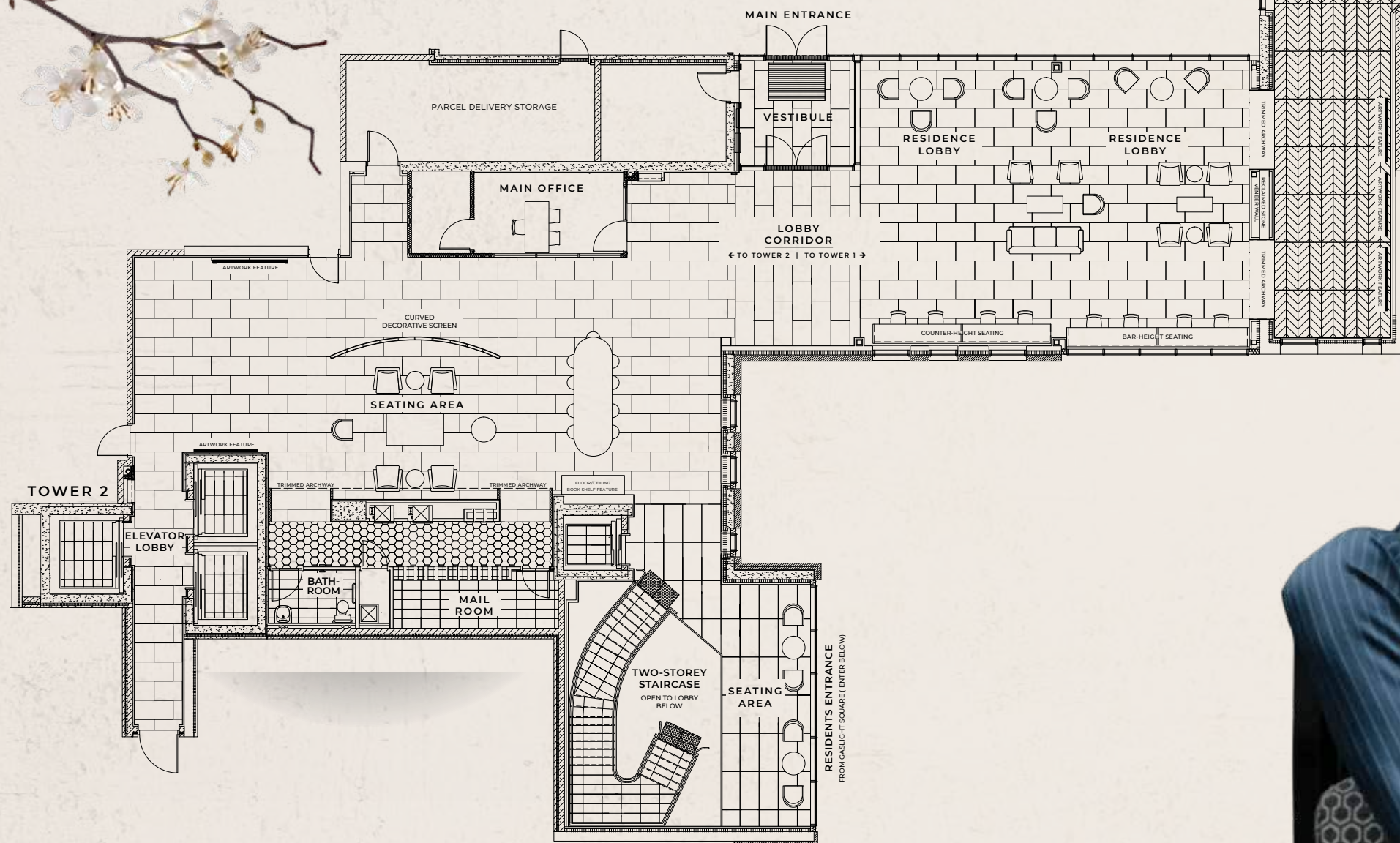
- Shared lobby area with ample seating for waiting guests
- Looks out to views of Gaslight Square
- Guests and residents can travel building-to-building without exiting to the outdoors
- Ambiance from modern fireplace with tile surround
- Secure video-monitored entrance
- Sleek and stylish contemporary finishes balanced with natural accents





LOBBY DESIGN

Arrive home in style. The gorgeous lobby at Gaslight Condominiums greets guests and residents alike in fashionable comfort. The sprawling space connecting both towers is accented by designer finishes, eye-catching artwork features and cozy seating throughout.



LOUNGE DESIGN



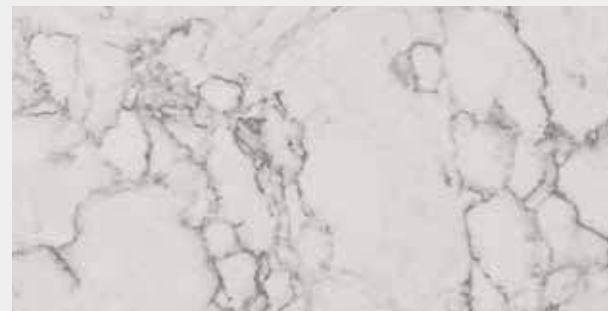
FLOORING



ACCENT PIECES



BAR COUNTERTOP



WALL & BAR COVERINGS



ACCENT PIECES



DESIGN INSPIRATION

INDUSTRIAL

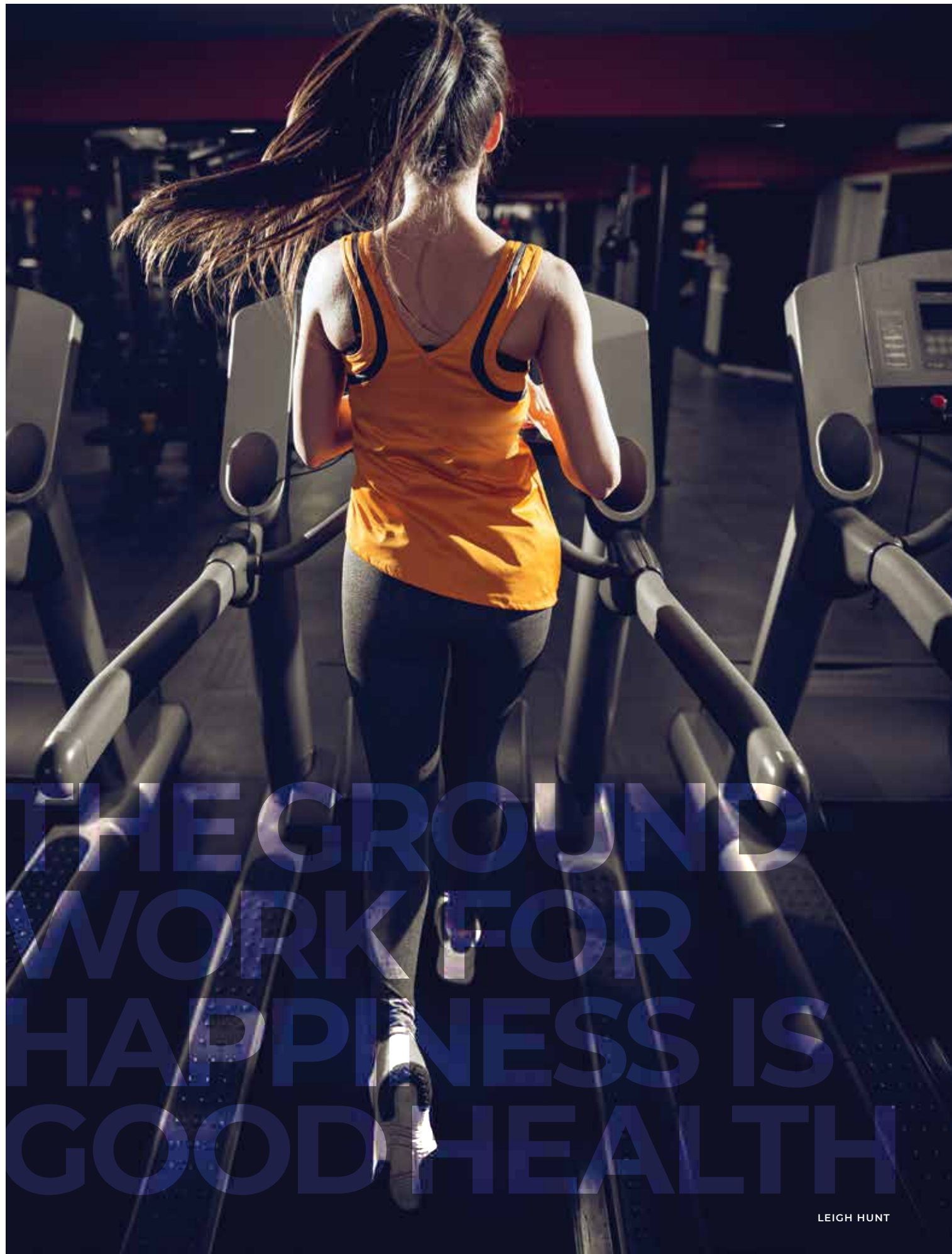
CHIC

Mirroring the aesthetic from the original factory buildings and industrial spaces of The Gaslight District, the residents lounge and party room will blend modern finishes with hints of industrial style. The use of unexpected materials and interior design will achieve a raw, edgy style without sacrificing comfort. Carefully curated, the Lounge will easily accommodate informal entertaining.

- Games room with billiards, ping-pong table and large TV
- Catering Kitchen and large private dining room for intimate dinner parties
- Reading area and library with lounge chairs and sofas
- Lounge areas open to an expansive outdoor terrace overlooking Gaslight Square
- Enjoy the outdoors in one of many seating areas complete with pergolas, fire pits and barbecue area





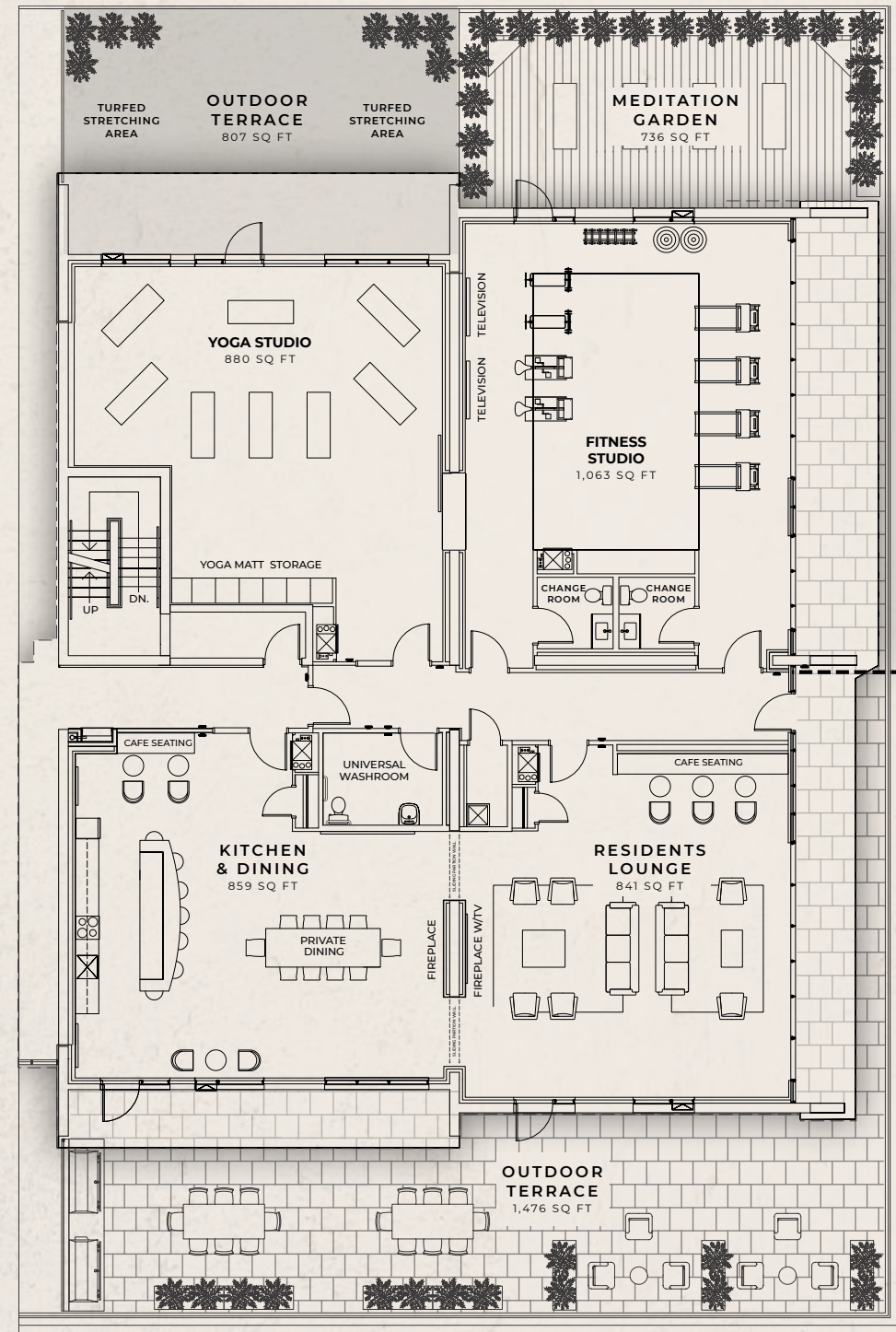


THE GROUND
WORK FOR
HAPPINESS IS
GOOD HEALTH

LEIGH HUNT

Tower 1 offers ample entertainment space along with professional level health and fitness features. The gym, yoga studio and stylish change rooms encourage residents to honour their well being with 5-star lifestyle amenities.

TOWER 1 AMENITIES



FITNESS AREA



FLOORING



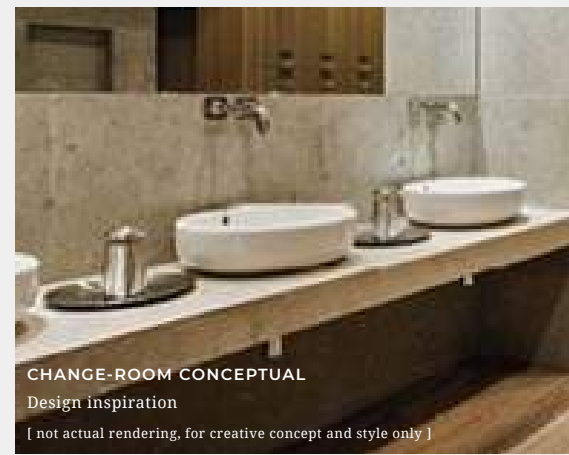
INSPIRATION



ACCENT PIECES



GYM CONCEPTUAL
Design inspiration
[not actual rendering, for creative concept and style only]



CHANGE-ROOM CONCEPTUAL
Design inspiration
[not actual rendering, for creative concept and style only]

DESIGN INSPIRATION

URBAN WELLNESS

OASIS

Fitness, form and function combine to create a space that emits a warm and calming environment. Residents will have elite-calibre equipment available 24 hours a day and can enjoy this light-filled space for quiet reflection or personal training sessions. Modern technologies are paired with soothing natural finishes to motivate you to reach your personal goals.

- State-of-the-art fitness equipment, and designated free weight areas
- Expansive yoga and pilates studio complete with designated mat storage areas
- Professionally designed mens and womens change-rooms with modern and trend- setting finishes

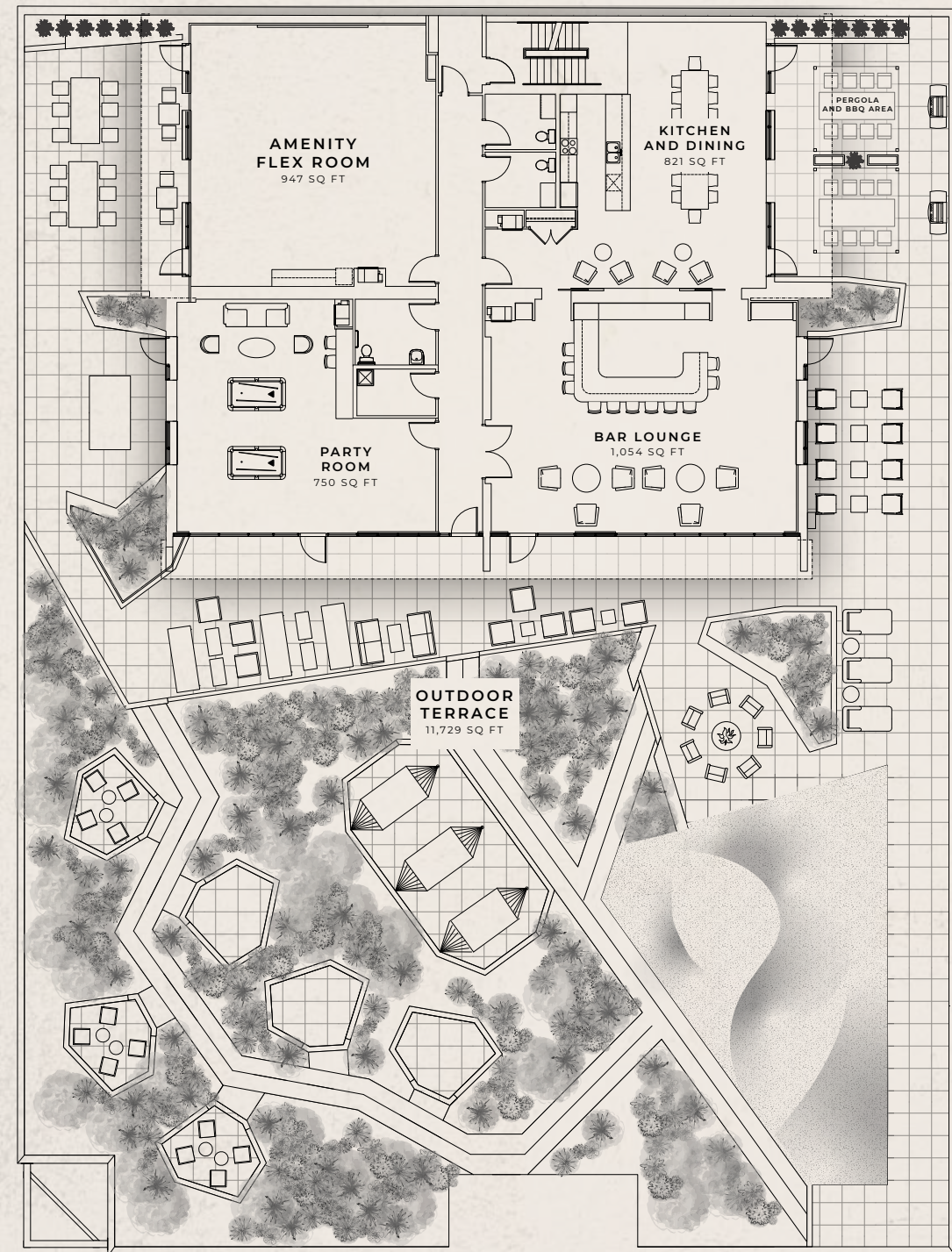




Illustrations are artists concept only. Landscape areas and plantings are subject to change without notice. See sales representative for details. E. & O. E.

TOWER 2 AMENITIES

Tower 2 boasts over 15,000 square feet of indoor and outdoor activity space. The outdoor terrace is an impressive architectural gem - a true backyard experience for high-rise living. Residents can enjoy social activities and leisure time while overlooking Gaslight Square and the Grand River.



Plans and specifications are subject to change without notice. Actual usable floor space may vary from stated floor area. Illustrations are artists concept only. E. & O. E.

TERRACE DESIGN

WALKWAY STYLING



FLOORING



ACCENT PIECES



ACCENT PIECES



LANDSCAPE DETAILS



DESIGN INSPIRATION

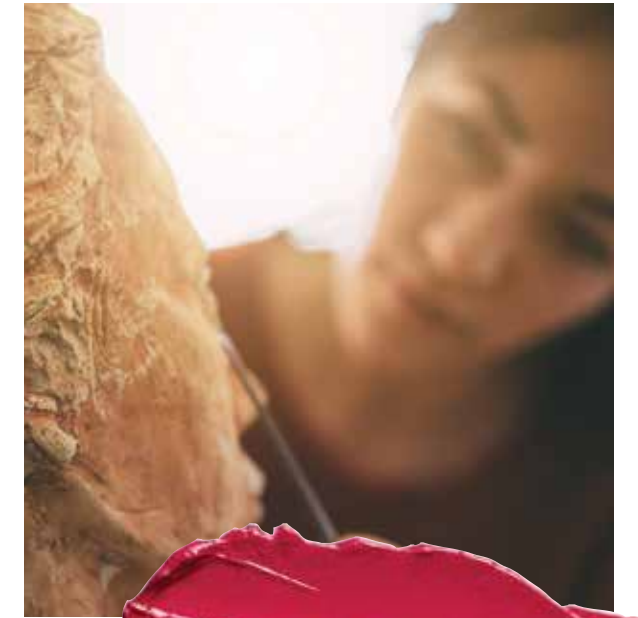
THE GREAT

OUTDOORS

High-rise doesn't mean compromise at Gaslight Condominiums. Tower 2's sprawling outdoor amenity area and private garden terrace boasts over 16,000 square feet of tactful space planning and lavish landscape architecture. Innovative execution and careful attention to detail was considered in every aspect of the design to create a spectacular outdoor oasis with views of your city below.

- Modern landscape design featuring grating walkways, tiered seating and conversation pods
- Hammock hideaway for the ultimate outdoor escape
- Pergola and common barbecue areas for outdoor entertaining
- Fire-pits, loungers, patio sets and bistro areas for all capacities of conversation
- Perennial plantings, flower beds and even a sloping real-lawn grassy bluff create a natural environment

STUDIOS AT GASLIGHT



GASLIGHT STUDIOS CREATIVE SPACES FOR CREATIVE MINDS

The Gaslight District is more than just a new place to live in Galt's downtown core. It's a creative neighbourhood with all the right ingredients to create a special vibrancy in Cambridge and become the home of artistic expression in Waterloo Region.

If you are seeking a place where people happily leave their private residences to take part in an exciting and ever-changing public life, you've found it in The Gaslight District.

Smart urban planning has shown that nothing adds buzz and excitement to a neighbourhood like the ability to experience new ideas and artistic expression. It has always been the key ingredient of significant urban communities such as SoHo, Chelsea and even Queen Street West. HIP Developments, the creators of The Gaslight District, understand this and have designed public spaces in Gaslight Square to accommodate a well curated mix of artists, makers and creative entrepreneurs.

Along the outer north and west edge of The Gaslight District, HIP Developments has designed 10 artist studio spaces. The Studios at Gaslight will be full of windows; open to light and to the public who can not only view newly finished pieces of art, but also experience art in the making. In order to create the right environment where community-culture is an important amenity, HIP has applied its "Free Streets" strategy, which acknowledges that innovative thinking requires the time, space and freedom to experiment. The Studios at Gaslight will be rent-free to hand selected tenants. This will give talented creators the financial breathing room needed to take a chance in perhaps developing the next big thing.

The benefit for the community is a true home for fresh and surprising art. You will have something to experience, absorb and reflect upon as you enjoy a nosh, a coffee or a cocktail in Gaslight Square.

Who knows, you might also end up with something amazing for the walls of your new condo too.

COMMUNITY

RELAX AT CHARMING CAFÉS AND BISTROS WHERE THE MISSION IS TO DELIVER DELICIOUS FARE IN AN ENVIRONMENT WHERE SERVICE AND QUALITY ARE PARAMOUNT. PARTAKE IN A PLAY AND ENJOY A RICH AND IMMERSIVE SENSORY EXPERIENCE. OR SIMPLY GET BACK TO THE RIVER AND ITS GREENSPACE OFFERING A RESPITE FROM CITY LIFE.

THE GASLIGHT DISTRICT HAS IT ALL STEPS AWAY.

A COMPLETE & CONNECTED COMMUNITY

THE GASLIGHT DISTRICT

Neighbourhood Amenities and Attractions

DAY IN THE DISTRICT

WHAT A DAY IT WAS

*Serena Ryder and Steven Page
shine a bright light on The Gaslight District*

A FESTIVAL OF ARTS

FEATURING FOOD,

PUBLIC ART, LIVE MUSIC

AND SO MUCH MORE

HIP Developments pulled out all the stops with a free community event. Branded *Day In The District*, the family friendly event officially introduced the public to The Gaslight District. On a gorgeous September weekend the event took place at what was previously the Southworks Outlet Mall on Grand Avenue with the backdrop of fragmented ruins and centuries-old structures providing the ultimate environment.

A Day In The District shined brightly to ignite community excitement and showcased a real-time vision of the \$120 million-plus redevelopment. With 3 main stages, vendors, food and craft demos, local artists and a selection of food and beverage trucks, one couldn't possibly take in all the great acts that played out over the course of the festivities.

The crowds came by the thousands to absorb the bold new vision in Galt, generating a kind of bustling beauty all around. With over 12,000 attendees, the response was tremendous with the square reaching capacity early afternoon. There was never a loss of activities or things to see and do. The entire day was an impressive example of a well organized, inclusive, community focussed and family friendly event.

Throughout the day, Gaslight Square was buzzing with the sounds of local musicians, artists and performers showcasing their musical, creative and culinary talents. Balloon characters greeted the smiling faces of children, who had been transformed with colourful painted palettes upon their cheeks. Fresh and unique experiences were curated to encourage community

DAY IN THE DISTRICT IGNITES EXCITEMENT

engagement. A larger than life mural dubbed The Happening involved attendees hurling paint soaked sponges at a blank canvas, creating an abstract masterpiece that would surely impress Jackson Pollock. This was a creative and collaborative experience to demonstrate that beautiful things can happen when a community comes together, and for this reason the piece was kept to be put on display.

There was also a public paint studio where budding artists got to take home their canvas creation, a free local food market, cooking demonstrations with renowned Chef D, as well as pop-up art displays and history galleries.

LOCAL TALENT PROVES TOP-NOTCH

The main stage crowd had plenty of music to move their feet to with a musical line-up that filled the square with energy. Headliners included the distinctive pop sounds of Steven Page (formerly of Barenaked Ladies) and listeners were treated to the mellow musings and infectious rock riffs of Serena Ryder. These Canadian talent sensations ignited the crowd and night air so that even those that couldn't get in enjoyed the sounds filling Galt. There's something pretty endearing about watching internationally renowned artists perform an arsenal of songs in a small local venue. The energy was palpable. The headliners provoked the kind of reactions of auditorium venues, creating genuinely lovely moments throughout crowd-pleasing sets.

APPLAUDING A POSITIVE RESPONSE

HIP Developments was overwhelmed with the response from Day in The District. Not only did the festivities draw massive crowds to take in the newly curated vision of a thriving urban environment to live, work and play, it also set a new and impressive condominium sales record for Waterloo Region. The Presentation Centre for the future Gaslight Condos was beautifully crafted to mirror the vibe and energy of an old-world European square. The culmination of old meets new materials echoed the intentions of what this project is expected to become. During a 48 hour period more than 90 per cent of the Gaslight District's phase one 20-storey condominium tower's 196 impressive residential suites were pre-sold.

The response reached beyond just condo sales. All of Galt was alive during the entirety of the day. Local businesses buzzed with excitement as many came to explore the community of Galt. The potential of the future fueled inside residents and owners alike, and the transformation alluded to a flourishing destination.

Speaking to the potential of the Gaslight District, President of HIP Developments, Scott Higgins said, "This place was the engine of growth for downtown Galt. For a while it was a retail establishment, which was great, but we want to turn it back into that engine that fosters the next bit of prosperity for the City of Cambridge."

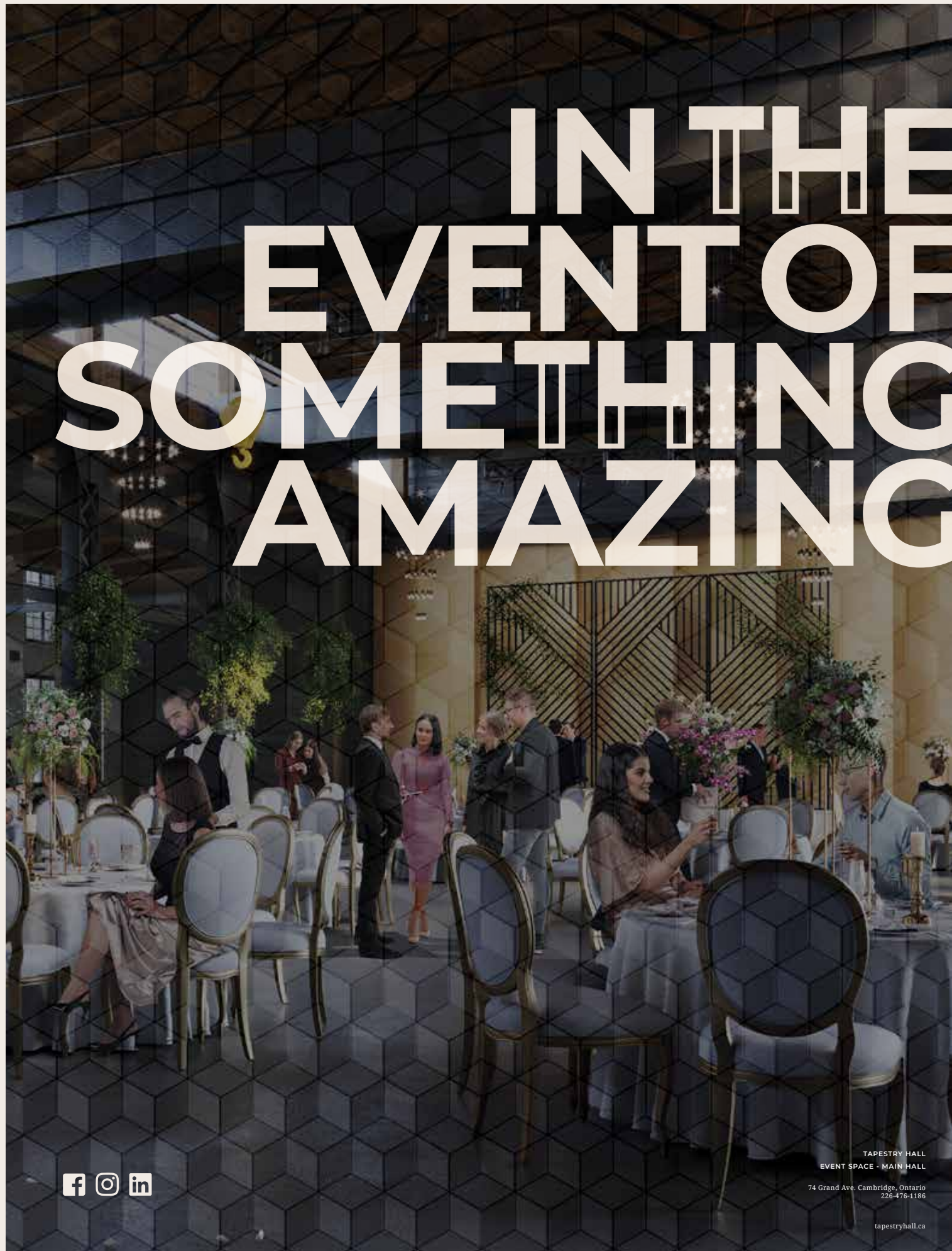
SET TO BE SPECTACULAR

Professionally executed and sparing no expense, Day in the District was a bold initiative to grab attendees by the collar and showcase what to expect in this space in the years to come. The event was received with positive feedback and unprecedented sales success.

HIP Developments hopes that the city and it's residents will continue to warmly welcome The Gaslight District. This transformational project will elevate Cambridge as a destination for living, working, dining and thriving, a destination destined to be pure genius.



IN THE EVENT OF SOMETHING AMAZING



TAPESTRY HALL
EVENT SPACE - MAIN HALL

74 Grand Ave. Cambridge, Ontario
226-476-1186

tapestryhall.ca



T A P E S T R Y H A L L



THE REGION'S PREMIER CONFERENCE + EVENT CENTRE

Located in a landmark building that once housed poignant industry innovators of the 19th and 20th centuries, Tapestry Hall is poised to be iconic.

Welcome to Tapestry Hall in The Gaslight District; a unique setting for the new home of celebration. Combining the heritage of century old limestone factory walls with vaulted cathedral-like ceilings and modern design and art. The result is an event space where the past becomes the building blocks of today's special moments and our hopes for the future.

Tapestry Hall is the perfect venue for weddings, corporate events, concerts, conferences, fund-raisers, galas, photo shoots and more. Welcome attendees to your event under a masterpiece that is sure to impress your guests. The Foyer ceiling is veiled by a one-of-a-kind mixed-media art installation, *Meander*, by renowned artist Philip Beesely, serving as the perfect gathering place and conversation piece. The Foyer also provides access to the cobblestone courtyard overlooking the activity in Gaslight Square.

The Main Hall boasts 20,500 sq. ft. of space, soaring 40 foot ceilings, and can accommodate 650 guests for a seated dinner or 1,000 for a cocktail style event.

The Mezzanine is available as an optional space when you reserve our Main Hall. Overlooking your event below in the expansive Main Hall, The Mezzanine can serve as a stylish VIP area, private meeting location, guest speaker suite, or break-out space.

The Tap Room is located right across the foyer from the Main Hall. With rich limestone, vintage beams, large windows and a view of Foundry Brewing's brew-room, the Tap Room is full of character. This modern versatile space features a stylish bar and is ideal for corporate events under 150 people.

Whether witnessing the commitment of a bride and groom, planning a community fundraiser or celebrating a graduation, Tapestry Hall is where our imaginations and conversations weave together in celebration ■



GALT WINGS BY SANDY PELL

HOME DECOR & SOMUCH MORE...

THE ART OF HOME
11 Ainslee Street, Cambridge
519-621-9237
theartofhome.ca

THEARTofHOME

YOUR HOUSE BECOMES A HOME AT THE ART OF HOME

From vintage finds to one-of-a-kind originals, The Art of Home has something for everyone.

The Art of Home is filled with unique finishing touches that let you personalize a space.

“Our store is a home-lifestyle boutique,” says co-owner Pamela Mangos. A mother and two-daughter shop, Joanne, Pamela and Laura are led by their combined passions of fashion and retail. “We love every aspect of what we do. From the buying to the merchandising to the interaction with our customers. We hand-select every item that goes on our shelves that we think customers will appreciate, and that we know we can stand behind.”

Originally from Brampton, the Art of Home team was drawn to Galt’s community vibe. “When we opened our doors in 2012 we chose Galt not only because of its beauty, but because of the people,” Pamela continues. “We have the best customers, and we love being a part of this community.”

The Art of Home team encourages clients to buy what makes them feel good. “It’s important to not get too caught up on what matches,” Pamela explains. “If you decorate your home with items that you love, it becomes a reflection of who you are.” Walking into their storefront, it’s obvious that Pamela, Joanne and Laura apply the same design principles to their shop.

With reminders of a rich and diverse history in its retro pieces to splashes of wonder and whimsy in finishing touches, and just a dash of on-trend modern lines, everyone is bound to find just what they are after. “We carry a curated selection of home, clothing and baby products that are unique, of great quality and will truly make you happy.”



MARTIN **SIMMONS** ARCHITECTS HIGHLIGHTING HISTORY

“THE REGION OF WATERLOO IS ONE OF THE MOST DYNAMIC REGIONS IN CANADA, AND CAMBRIDGE’S ECONOMIC PROSPERITY, ATTITUDE TOWARDS COMMUNITY BUILDING, AND POLITICAL AND COMMUNITY BACKGROUND COME TOGETHER TO MAKE THE PERFECT STORM FOR THIS KIND OF DEVELOPMENT.”

PATRICK SIMMONS

Partner | MartinSimmons Architects

A hundred years ago, the Grand River wasn’t valued for its natural beauty as it is today. Instead, its power was harnessed to move mills while its constant flow flushed out industrial and farming run-off. But today, the Grand River, which snakes its way through Preston, Galt and Hespeler, has become synonymous with the city’s charm.

With a nod to the town’s history and a focus on the future, MartinSimmons Architects Inc. is excited to be playing a role in The Gaslight District development.

MartinSimmons Architects Inc. has built a reputation as a leader in the restoration and redevelopment of heritage sites, including their extensive redevelopment of the Google building in Kitchener. “It’s great that we’ve been asked to be a part of The Gaslight District project, and to get the opportunity to breathe life back into these architecturally stunning buildings,” says Patrick.

Originally built as factories, the Southworks site has been used as an antique market and outlet mall. “What other town has a treasure of a building complex that’s so perfectly suited to this kind of development? You’d have to look far and wide to see an old heritage industrial building of this quality and size to be used like this.”

Patrick’s team is committed to stripping away the layer of late 20th century use to expose as much of the original character as possible. “We’re going to be adding and restoring parts of these buildings to help let people appreciate them both for what they

were and for what they will offer them,” he continues. “The existing buildings have a great feel and vibe - including exposed stone and large windows. Our goal is to reinforce these features, not detract from them. We won’t try to emulate the old features, but rather will use modern elements to draw attention to the historic beauty.”

Beyond the challenges and opportunities this project presents, Patrick has a personal interest in seeing The Gaslight District come to life: the impact it will have on his hometown. For over 25 years he’s called Galt home - raising his family in an 1868 stone house and renovating and owning a 10 unit multi-use building not far from the development. “This means so much for our city, it’s a boost of confidence,” he says. “The Gaslight District says we have the vision, commitment, and economic and political power to take on a project of this magnitude. It’s going to be great.”

A LOCATION LIKE NO OTHER

“PEOPLE DON’T KNOW THERE’S THIS JEWEL THAT’S JUST AN HOUR FROM TORONTO, HAMILTON OR LONDON. CAMBRIDGE IS A SPECTACULAR CITY.”

PATRICK SIMMONS

Partner | MartinSimmons Architects

MARTIN SIMMONS ARCHITECTS

113 Breithaupt St. Suite 200
Kitchener, Ontario N2H 5G9

MARTINSIMMONS.CA

THE BUSINESS

OF RUNNING AN

ART

THE HAMILTON FAMILY THEATRE

BY STEVEN KARCHER

“Our goal from the beginning has been to serve as a beacon, an introduction to the city which serves as a focal point and meeting place for residents, while also attracting visitors from both near and far.”

ALEX MUSTAKAS
Artistic Director | Hamilton Family Theatre

Since opening the Hamilton Family Theatre in Cambridge, Drayton Entertainment has delivered on its promise to enable community, commerce and creativity to converge, resulting in new synergies between the traditional and innovative.

The Hamilton Family Theatre attracts an annual audience exceeding 100,000 through 27 weeks of live theatre programming along with a myriad of community events and facility rentals, including charitable fundraisers, dance competitions, symphony concerts, film festivals, school presentations and more.

“Our goal from the beginning has been to serve as a beacon – an introduction to the city which serves as a focal point and meeting place for residents, while also attracting visitors from both near and far,” says Artistic Director Alex Mustakas.

In this win-win proposition, the community benefits from the increased tourism and economic activity, along with access to a multi-purpose facility that can accommodate the specific needs of a variety of artistic disciplines. »

HAMILTON FAMILY THEATRE PRESENTS THE BELOVED FAMILY MUSICAL

Annie

OCTOBER
2ND

OCTOBER
27TH

Order Tickets Online

HAMILTON FAMILY THEATRE · 46 GRAND AVE S · CAMBRIDGE · draytonentertainment.com

drayton
entertainment



In addition to housing a 500 seat venue, the complex contains consolidated administration, production and wardrobe facilities to service all seven of Drayton Entertainment's theatres throughout the province (these venues include the Drayton Festival Theatre, Huron Country Playhouse and Playhouse II in Grand Bend, King's Wharf Theatre in Penetanguishene, and the St. Jacobs Country Playhouse and St. Jacobs Schoolhouse Theatre here in Waterloo Region).

This major cultural hub embodies the principles of creative community building. As part of broader urban strategies around the world, cities are engaging culture and creativity as engines of economic and social transformation. The motivations driving these efforts include cultural and tourism development, innovation agendas around commercialization of knowledge, talent attraction strategies, and broader citizen engagement.

The theatre speaks to the very heart of a city in transition – one that is intent on refashioning itself as a more well-rounded, dynamic, and diverse community. Recent projects in Cambridge, including the School of Architecture, Conestoga College, The Mill Restaurant, Main Street Streetscaping, Waterscape Condos, and City Hall are testament to a city dedicated to developing dynamic environments that attract, inspire, and sustain creative people.

Community support is such a key component to this strategy. In recognition of the sustained support of local philanthropists John and Terry Hamilton, the Theatre was officially named The Hamilton Family Theatre in 2018.



STAGE PERFORMANCE
Grease, 2019
Cheslea Preston as Sandy, David Cotton as Danny and Company.
Photography Courtesy: Drayton Entertainment

A recent Ontario Arts Council survey reports that 93% of Ontarians say that arts activities help enrich the quality of our lives, and 90% believe that an active local arts scene helps make a community a better place to live.

Mustakas' peerless vision has resulted in one of the most respected, charitable arts organizations in Canada. Thirty productions are staged annually across all seven venues, triggering \$40 million in economic spin-off to the broader community. With hundreds of artist contracts awarded annually, Drayton Entertainment is one of the largest employers of professional artists in the country.

Perhaps even more impressive is that this remarkable feat has been achieved without annual operating funding from any level of government or arts council. Eighty percent of the annual \$11 million budget is realized through ticket sales, and

the remainder through fundraising and donations. As a result, Drayton Entertainment's unique model of self-sufficiency is studied across Canada and around the world.

By carefully amortizing costs for set construction, costumes and other production related elements, shows are easily transferred between the organization's seven different theatres, providing valuable savings which are then passed on directly to theatre-goers so that ticket prices remain affordable and accessible.

Upcoming productions include Family favourite Annie (Oct.2 - Oct.27) and quirky festive fun with Elf (Nov.20 - Dec.22). For tickets and more information visit:

DRAYTONENTERTAINMENT.COM ■

COME IN FOR A CUPPA COMFORT AT MONIGRAM COFFEE ROASTERS

“We loved that the old, exposed brick, hardwood floor, and the dry cleaning lines snaking through the space all hinted to the history of the building,” reflects Graham Braun. Originally built around 1915 as a grain and feed store, it became a dry cleaners in the 50s. Today, the space is home to Monigram Coffee Roasters, and bustles with commuters until last call. Situated in the centre of a public parking lot in Galt’s downtown core, Monica and Graham couldn’t imagine a better space to invite their community in for a great cup of coffee, a bite to eat and some conversation.

Monica and Graham made their way to Galt via Montreal. “We met at the University of Guelph and ended up in corporate Canada in Montreal. When our family was young, we decided to move home and Cambridge seemed like a nice spot. Then we had to decide - do we go back into corporate Canada or do we follow our passion? I’d been roasting coffee in my basement a la Breaking Bad and we decided to go that path.” Now the Brauns could not imagine life any other way.

“The sense of community is so strong here, and the downtown core - with it’s 100 year old architecture and amazing concentration of diverse indie businesses - is enough to make other cities look pale.” Since opening in 2012, Monica and Graham have become champions of Galt’s renaissance. Graham

continues. “Monica’s business card says ‘I don’t say no too much’, and that’s pretty much become our motto and driving force, which is rewarding in a way we didn’t expect.”

Sitting down to a perfectly crafted pour-over and one of Monica’s homemade biscotti, it’s easy to see what Graham means. The town’s history and meandering river views give you the opportunity to pause and really enjoy the moment.

GRAHAM’S PERFECT POUR-OVER

“IT STARTS WITH EXPERIMENTATION AND IS FINISHED WITH AN ANALYTICAL STYLE,” SAYS GRAHAM. “YOU NEED TO WEIGH YOUR COFFEE AND WATER AND KNOW THE TEMPERATURE OF YOUR WATER. AND THEN YOU NEED TO EXERCISE PATIENCE.” THE BEST WAY TO LEARN? “A GOOD POUR OVER IS ALL ABOUT FLOW - WHICH I CAN SHOW IN A TUTORIAL, AVAILABLE ANY TIME YOU COME IN FOR VISIT.”

MONIGRAM COFFEE ROASTERS

16 Ainslie St. S.
Cambridge, Ontario

MONIGRAM.CA

GRAND IDEAS GROWING ON GRAND AVE.

For decades, Tiger Brand produced the finest quality T-shirts. Now the former factory on Grand Avenue in Galt has been reborn as a launch pad for the finest quality ideas. From the re-envisioned architecture, to the skill of its construction, to the minds that work here, many great things have been put into 96 Grand Ave. so that a lot of grand things can come out of it.



TENANT PROFILE: CONESTOGA COLLEGE APPLIED RESEARCH & INNOVATION

More than a century ago, the foundry in Galt began producing steam engines, flax mills and fire-proof safes. Today, that same site is still focused on manufacturing, but it's big ideas that are now coming off the production line.

96 Grand Avenue South, in the heart of the Gaslight District, is home to Conestoga Applied Research and Innovation (CARI). The new facility opened its doors in June 2018 and is a testament to the success seen in applied research at Conestoga College Institute of Technology and Advanced Learning.

Inside, researchers and industry partners come together to tackle real-world challenges in areas such as advanced manufacturing, electrical waste recovery and cyber-security solutions.

Many of those ideas are tested in the SMART Centre, a 12,000 square foot lab with cutting-edge research facilities including the Manufacturing Innovation Lab and the Next-Gen Electrical Waste Recovery Plant. This is where CARI plans to focus not only on sustainable manufacturing and building more responsible and environmentally friendly products, but also on finding ways to dismantle those electronics at the end of their lifecycle, recover reusable parts and make e-recycling

economically feasible using machine learning and artificial intelligence.

The work is paying off. In 2018, Conestoga was recognized as one of Canada's top 25 applied research colleges, engaging 3,605 students and 267 faculty in 1,761 research projects.



TENANT PROFILE: INVEST CAMBRIDGE

The INVEST Cambridge team is proud to operate out of 96 Grand Avenue in the Gaslight District where they collaborate with City and Regional Departments to create conditions for economic success throughout the City.

INVEST Cambridge encourages new investment in co-operation with local partners, neighbouring cities and townships. These efforts support: existing businesses with growth and expansion, small businesses through consultation services, and promotion of properties for investment.

Concierge service is available to assist navigation of municipal processes relating to zoning, planning, engineering, financing, and more as well as providing referrals to agencies for funding opportunities and incentives where applicable.

"It's critical that we find solutions to deal with e-waste - the unintended consequence of the digital age. Given that Waterloo Region is known as the high-tech capital of Canada, we are proud that this ground-breaking work is taking place right here in Cambridge,"

BARBARA FENNESSY
Vice President | Conestoga College, Applied Research



designing a dream city is easy; rebuilding a living one takes imagination.

Jane Jacobs



CIRCA 1877
ABA Architects for HIP Developments
Waterloo, Ontario

aba architects inc.

ABA has been fortunate to have collaborated with HIP Developments for the design and delivery of a dozen apartment buildings in and around Waterloo Region since 2012. We are proud of this body of work and see The Gaslight District as a culmination of all these mutual successes.

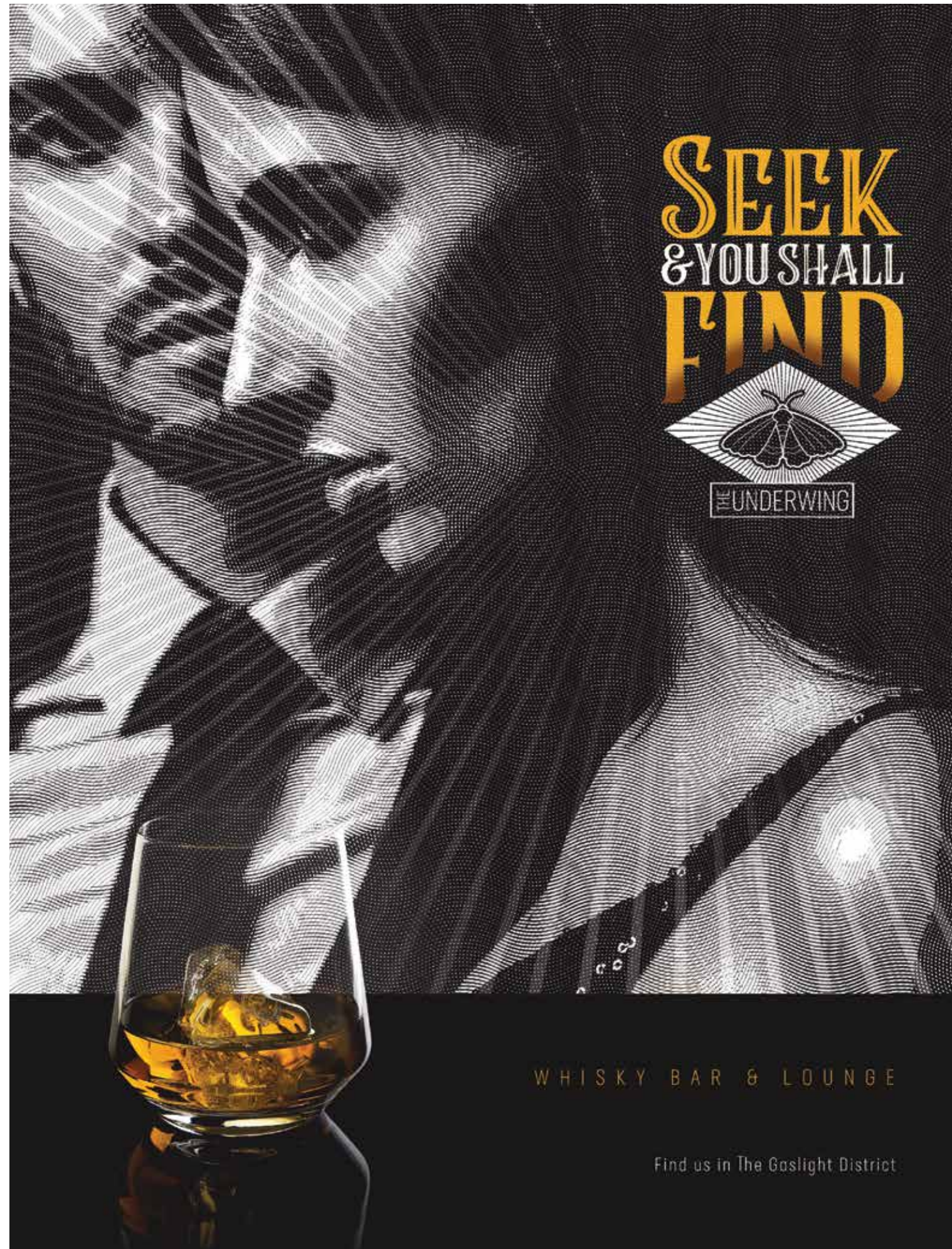
The Gaslight Condos at The Gaslight District is the latest residential project we have unveiled in collaboration with HIP Developments. We are certain these towers will be a landmark, precedent setting residence in Downtown Galt.

The realization of The Gaslight District will be a transformational moment for Galt and we take what Jane Jacobs said as our design ethos for this effort: this is about rebuilding a living city; it's not supposed to be easy. We understand what's at stake here and are energized by the challenge. We will leverage our imaginations and bring all of our collective experience to bear on this most significant piece of city-making.

aba architects inc.

5-564 Weber St. N.
Waterloo, Ontario, N1R 1V6

519 884 2711 abarchitect.ca



**SEEK
& YOU SHALL
FIND**



THE UNDERWING

WHISKY BAR & LOUNGE

Find us in The Gaslight District

CONNECTING
PEOPLE + ART

Gaslight Square will transform into an interactive and engaging digital playground with the imaginative work of Daily Tous Les Jours.

Gaslight Square will be one of the most vibrant public spaces in Ontario. This is due, in part, because of the restaurants, shops and bars that will inhabit the old limestone buildings, but will also be due to the cultural stories the space holds. The grounds of Gaslight Square are also the grounds of Galt's history, industry and prosperity. Over the years much of that has been taken for granted – especially the Grand River. Gaslight Square will usher in a new era for Cambridge; a time when we celebrate our past and who we have become.

Through the use of installation art, the centre of Gaslight Square will be a place where we can all play, laugh with strangers, and celebrate the stories of our river.

The Grand River defined our past. Its natural structure gave us a home and beauty. We tamed it and put the river to work for our mills and factories. The river rebelled and flooded the community - causing us to come together, be inventive and form deeper community bonds.

At Gaslight Square, we will come together again along the well marked flood line, only this time, we can play as a community.

Through the imaginative work of Daily Tous Les Jours, the creators of Montreal's famous musical swings, the centre of the public square will be a light, motion and sound game-board where you become the movable pieces of the game. With old and new friends, your movements along the flood line will create music and art, which will be projected on the large walls of Gaslight Square. Since the crowds and movements are never the same, neither are the sounds and light show.

Our famous flood, and its physical marking in the Square will become a place where we play, dance and joyfully say "this is us".



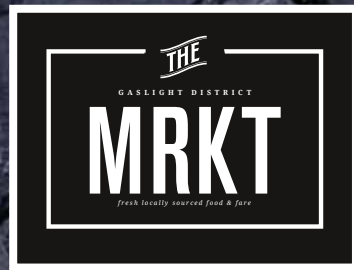
MUSICAL SHADOWS
Daily Tous Les Jours; Arizona
Photo ©David Drury



21 BALANÇOIRES
Daily Tous Les Jours; Montreal Canada
Photo ©Olivier Blouin



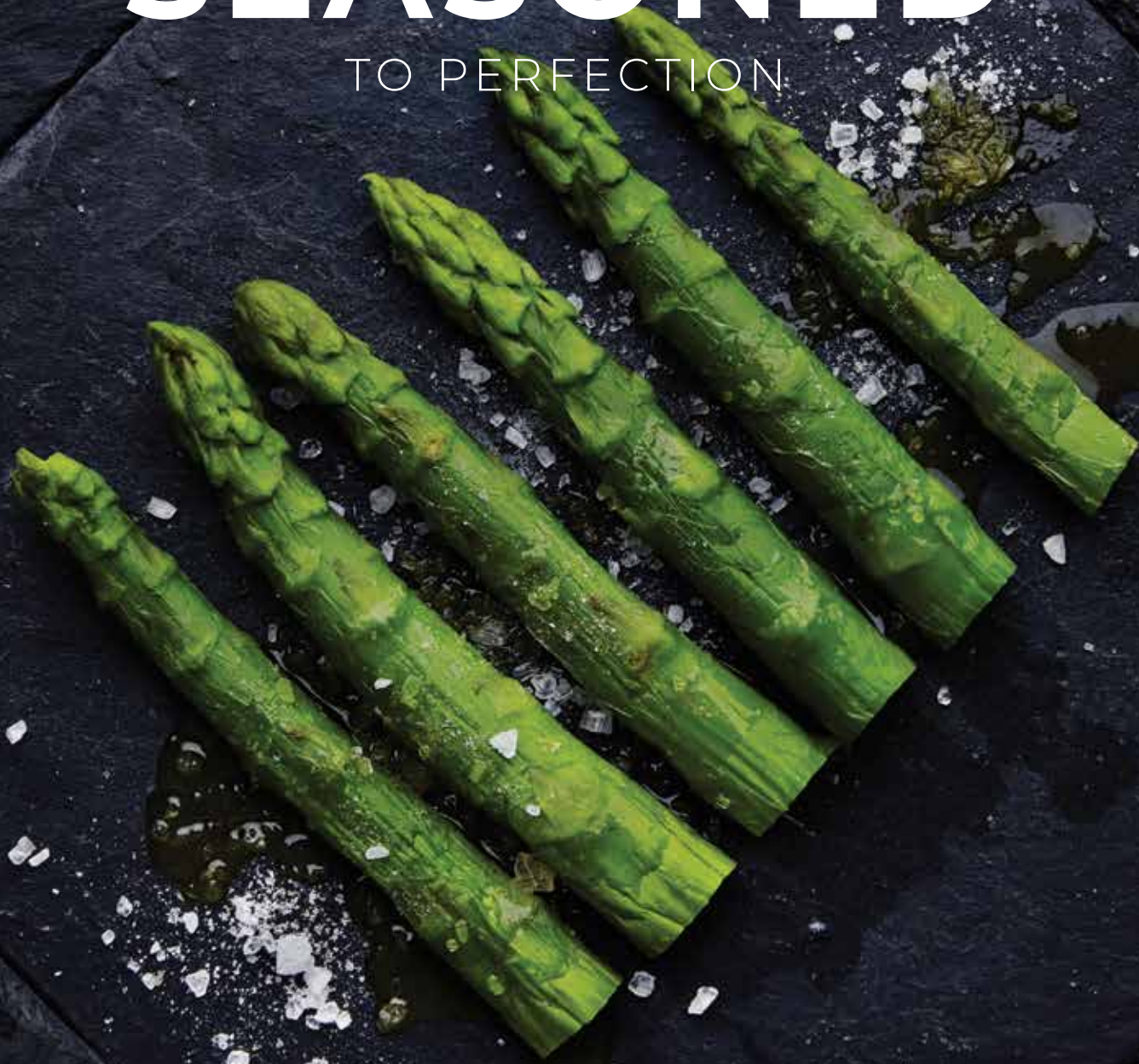
PLAYING
WITH OUR PAST



A CONCEPT

SEASONED

TO PERFECTION



We're in the midst of a food movement. The trend to choose the small format grocery has been in the making for several years now, but combine this with pedestrian focused walkable neighbourhoods and the local food-small farm explosion and you will see a tremendous return to sole proprietor small urban grocery stores. Who really needs two glued together family size packs of Fruit Loops anyways?

"It's no coincidence that thriving urban areas tend to have a great urban grocery anchor. Think of Vincenzo's in Waterloo or Pusateri's in Toronto as examples of the type of Urban grocery that will anchor The Gaslight District" says Scott Higgins, President of HIP Developments.

Be it local butchers, dairy farmers, bakers, a sustainable fishery or an organic farmer The MRKT

will focus on sourcing fresh, local fare all in one convenient stop and a mere one minute stroll from the lobby of The Gaslight Condominiums towers.

"We love the idea of food being local and of supporting our community," says Higgins, "The MRKT at The Gaslight District will complement the Cambridge Farmers' Market, and provide residents with fresh food at their doorstep and eliminate the need to drive to a big box food store and endure an aisle dance with an oversized shopping cart!"

Complete with café with outdoor patio space and seating, The MRKT is set to open in the first phase of The Gaslight District and will serve not only those that call The Gaslight District Condominiums home, but will also become a regular stop for those visiting Galt and The Gaslight Square. »

TODAY'S FOOD TRENDS



ARTISANAL CHEESE

Ok ok, vegan diets, hold the dairy... but come on... who doesn't love artisanal cheese?

With so many unique flavours to choose from, your palette will never be bored. Bring on a ripe farmstead wedge and a bottle of Niagara white and you have a perfect complement to a warm summer night on your condominium terrace.



CRAFT BUTCHERY

Small farming, heritage protein — call it what you want — it's back-to-basics for your meat.

Home cooks are increasingly looking for pasture-raised meats from smaller producers as their choice of protein for meals with friends and family. Hormone free and ethically produced options are what people are seeking for today's healthier buyers.



PURPLE VEG ANYONE?

Purple variations of our favourite produce (cauliflower, carrots, potatoes, corn, asparagus, etc.) are finally becoming more mainstream.

Colours of fruits and veggies indicate which nutrients they possess. So roasting up a blend of colourful selections means you're giving your body a wider breadth of vitamins for optimal health.

THE
GASLIGHT DISTRICT
MRKT
fresh locally sourced food & fare

GDBY JNK.

The MRKT Offers Just Simple, Healthy, Fresh Local Food. Nothing Else.

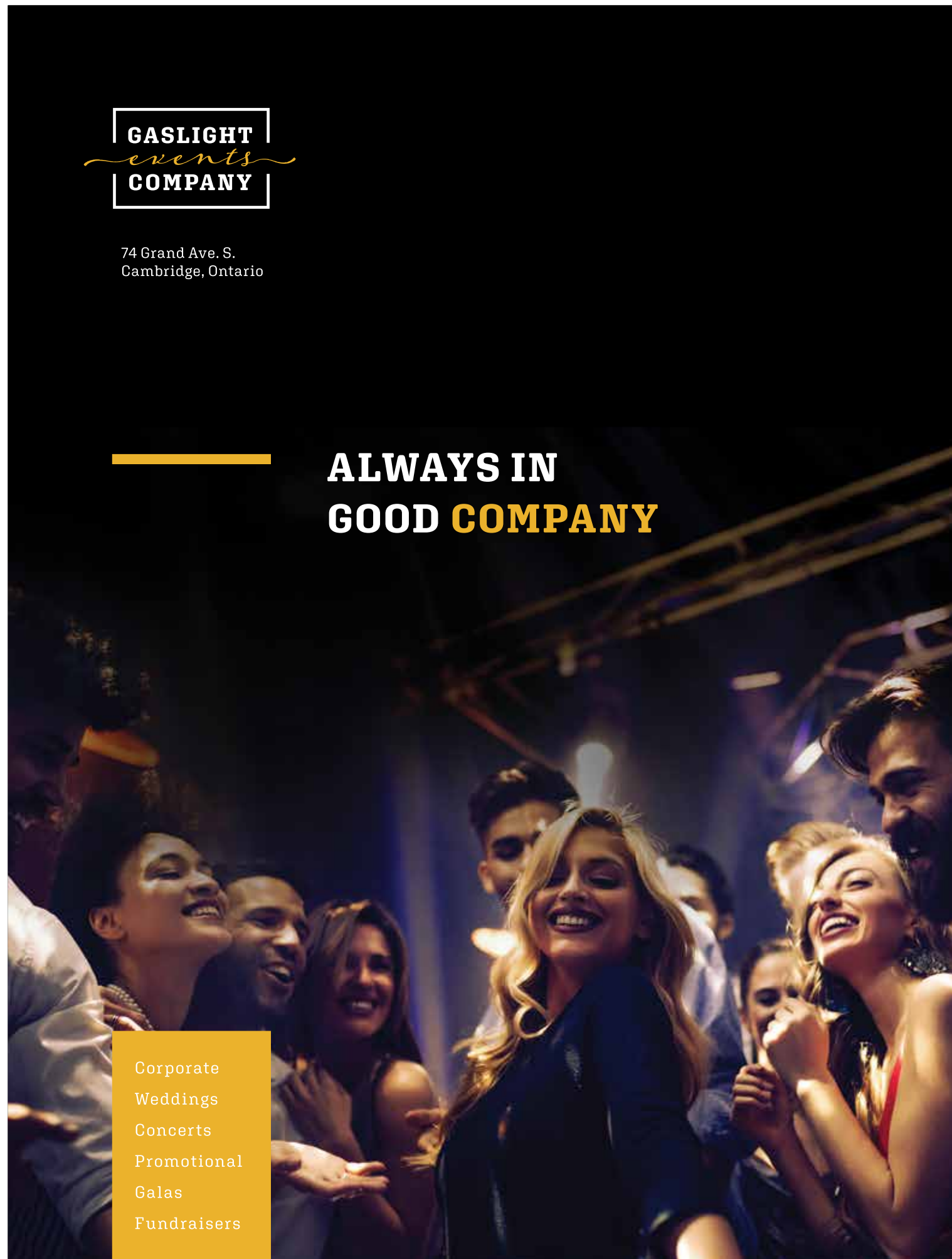
VISIT US IN THE GASLIGHT DISTRICT | OPENING SOON



74 Grand Ave. S.
Cambridge, Ontario

ALWAYS IN GOOD COMPANY

- Corporate
- Weddings
- Concerts
- Promotional
- Galas
- Fundraisers



LOVING THE COMPANY WE KEEP AT GASLIGHT EVENTS COMPANY

“Be Better” are the words partners and staff live by every day at the Gaslight Events Company. There is no over inflated or immeasurable goal of being the best, instead everyday and every project is approached as an opportunity to be better than before.

The team at Gaslight Events Company cares, like really cares about their clients. There exists a sincere passion to understand unique personalities and transform clients visions into an unforgettable experience. A great event happens long before guests arrive, with care for the specifics and care for the clients, and Gaslight Events Company strives for excellence and complete customer satisfaction always.

With enthusiasm, expertise and over three decades of experience at the leadership level, Gaslight Events Company has a success record that is unparalleled

in Waterloo-Region. Comprised of a highly skilled management team, the Gaslight Events Company is led by Carolina Soares and Kyle Priestley. They are joined by Corporate Culinary Director Andrew Ellerby, who has worked closely with chef Mark McEwan as the Culinary Director of the McEwan Group. Christina Marshall is Director of Business Development and has a long history of accomplishment in media, public relations and account management across many industries.

You'll always be in good company with Gaslight Events Company. With an energetic and passionate team, the sky is the limit when it comes to seamlessly planning your event, concert or wedding. From ticketing, floor plans, menus and production, to talent booking and management coordination, the Gaslight Event Company team will surpass your expectations and have a great time doing it!



INTERVIEW WITH A BREWMASTER

"AFTER MOVING TO
KW WITH MY WIFE IN
2016 I GOT A JOB AT A
LOCAL BREWERY, WHILE
I WAS THERE I MET
THE GUYS FROM HIP
DEVELOPMENTS... AND
THE REST IS HISTORY"

GEOFF WISEMAN
-On forging his new position as Brewmaster at Foundry Brewing Inc.

GEOFF WISEMAN
Brewmaster
Foundry Brewing Inc.

Set in the heart of The Gaslight District, Foundry Brewing calls the former factory grounds of the historic Goldie McCulloch site home.

The brewery is re-embracing the methodology and mind-set of years gone-by when hard work and heart were poured into everything you do. Foundry is passionate about offering innovative craft brewing concepts while simultaneously paying homage to the authenticity of our historic roots. Breathing new life and energy into the former factory-grounds, Foundry Brewing will offer expertly crafted beers that are artfully brewed using a combination of local ingredients, new flavour trends, complex character, and tried and true technique.

Brewmaster Geoff Wiseman's career began in 2008 after graduating with a bachelor's degree from the University of Guelph. From learning the ropes in R&D at Labatt's, to discovering how large breweries consistently produce high quality beers at Oland's in Halifax, to mastering recipe design and heading facilities at Mill Street and Grand River Brewing, Geoff's own diverse history and varied resume has provided him with a complete understanding of the craft on both large and smaller scales.

We sat down with Geoff to uncover more about this award winning brewer and master-crafter's style as he begins to lead a new dimension in flavour and excellence at Foundry Brewing Inc.

DESCRIBE YOUR FIRST BREW? "The first time I brewed was for *Project Potato* at the University of Guelph. It was when I went to check on my beer on the second day and I saw high krausen for the first time and I knew I was hooked. My first commercial beer that I brewed was Labatt's Blue while I was working my first brewing job at the John Labatt Innovation Centre."

FAVOURITE BEER STYLE? "Lagers and IPA's. I like lagers for the technical difficulties in brewing them great every time. I like IPA's for the amazing different flavour profiles that you can get out of them just by changing the hops."

FAVOURITE BEER YOU HAVE BREWED? "To date it's West Coast IPA from Mill Street. I think that the crazy amount of hops that went into that brew and the flavour profile fit with the style perfectly."

DRAUGHT, BOTTLE OR CANS? "Draught is the best way to consume beer. The great advantage of it is that normally it is fresh and it is designed to be consumed with good friends"

WHAT'S IN STORE FOR FOUNDRY BREWING? "Awesome things. Our taproom will feature four main line brews plus seasonal batches and limited editions. Our main line staples are anything but mainstream and deliver on taste, aroma and uniqueness."



GET LOST AT FOUNDRY



For the days you need to get away and the only complexity you're seeking is the character in a really good beer...

GET LOST AND FIND YOURSELF AT FOUNDRY BREWING.

foundrybrewing.ca

FOUNDRY BREWING: 74 Grand Avenue South, Cambridge



HIP
DEVELOPMENTS

Building more than real estate

At HIP, we're committed to helping shape a vibrant and confident community that dreams big, stays creative and lives passionately.

CORPORATE OFFICE:

64 Grand Ave. S.
Building B

Cambridge, Ontario

hipdevelopments.com

CIRCA Waterloo, Ontario / HIP Developments



A RICH HISTORY HAS ILLUMINATED THE PATH
TO THE URBAN ENVIRONMENT THAT IS BEING CREATED TODAY.

The Gaslight District will be a thriving hub in a revitalized urban core, graced with the same vintage details from its former days.

The development will be an adaptive reuse of the historic structures combined with new buildings that will respect the historic architectural components and materials to craft a stunning street presence. New life will be breathed into the Galt core all the while respecting and preserving the heritage indefinitely.

THEGASLIGHTDISTRICT.CA